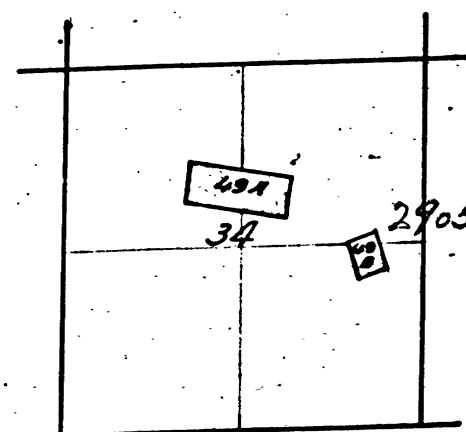


T. 4 N. R. 13 E. M. D. M.



2905-49A Esmeralda Quartz Mine  
49B " " Mill Site.

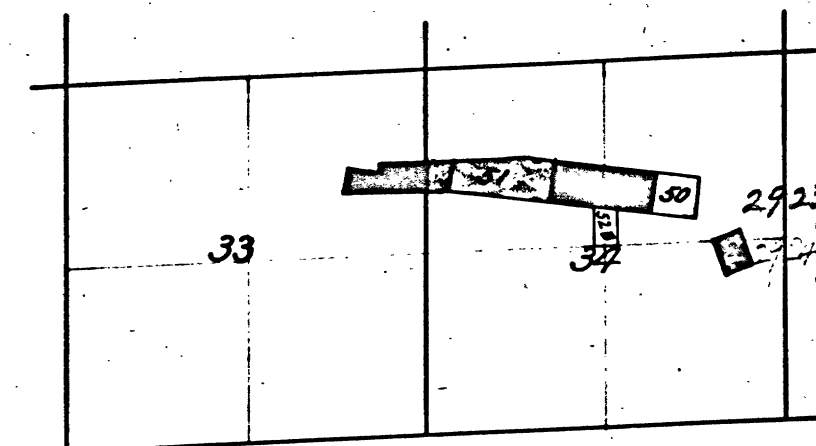
Disagreement in surveys. Segregation cannot be correctly made.

The above diagram of Section 34 Township N<sup>o</sup> 4 North Range N<sup>o</sup> 13 East, Mount Diablo Meridian, is correctly copied from the original map as amended and on file in this office.

U.S. Surveyor General's Office,  
San Francisco, California.  
December 7<sup>th</sup> 1889

R. P. Hammond, Jr.  
U.S. Surv. Gen. Cal.

T. 4 N. R. 13 E. M. D. M.



50 Sunrise Quartz Mine  
2923-51 K.J. " " V101-7  
52A Bonehard " " Mill Site  
52B " " "

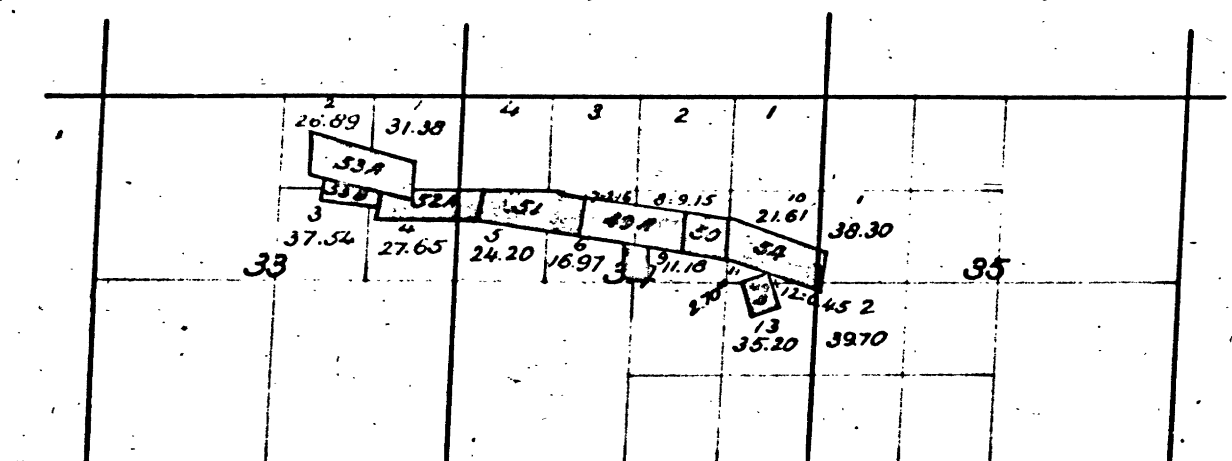
Areas cannot be accurately calculated

The above diagram of Sections 33 & 34 Township N<sup>o</sup> 4 North Range N<sup>o</sup> 13 East, Mount Diablo Meridian, is correctly copied from the original map as amended and on file in this office.

U.S. Surveyor General's Office,  
San Francisco, California.  
February 14<sup>th</sup> 1890

R. P. Hammond, Jr.  
U.S. Surv. Gen. Cal.

T. 4 N. R. 13 E. M. D. M.



2905-49A Esmeralda Quartz Mine  
49B " " Mill Site  
2923-51 Sunrise Quartz Mine  
2923-51 K.J. " " V101-7  
2924-52A Bonehard " " Mill Site  
52B " " "  
53A Basco Quartz Mine  
53B " " Mill Site  
54 Bence Quartz Mine

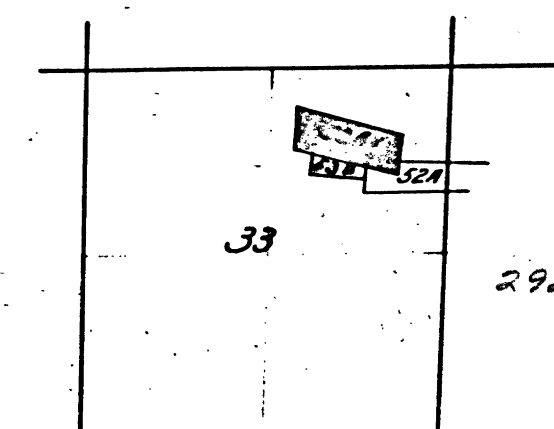
4 Segregation of agricultural from mineral land Let 4 Sec 33 & Lots 5, 6 & 9 of Sec 34 See field notes of Dep. Sur. A.H. Coulter, dated June 11<sup>th</sup> 1890

The above diagram of Secs N<sup>o</sup> 33, 34 & 35, Township N<sup>o</sup> 4 North, Range N<sup>o</sup> 13 East, Mount Diablo Meridian is correctly copied from the original map as amended and on file in this Office.

U.S. Surveyor General's Office,  
San Francisco, California  
July 17<sup>th</sup> 1890

Wm. H. Pradd  
U.S. Surv. Gen. Cal.

T. 4 N. R. 13 E. M. D. M.



2924-53A Basco Quartz Mine  
53B " " Mill Site. V82-12

Areas cannot be accurately calculated

The above diagram of Section N<sup>o</sup> 33, Township N<sup>o</sup> 4 North, Range N<sup>o</sup> 13 East, Mount Diablo Meridian is correctly copied from the original map as amended and on file in this Office.

U.S. Surveyor General's Office,  
San Francisco, California  
February 15<sup>th</sup> 1890.

R. P. Hammond, Jr.  
U.S. Surv. Gen. Cal.

DEPARTMENT OF THE INTERIOR  
GENERAL LAND OFFICE,  
Washington, D. C. Feb. 5, 1908.

I hereby certify that this is a true copy of the plat of official survey of the lands to which it relates, on file in this office.

W. H. Pradd  
Recorder, General Land Office.