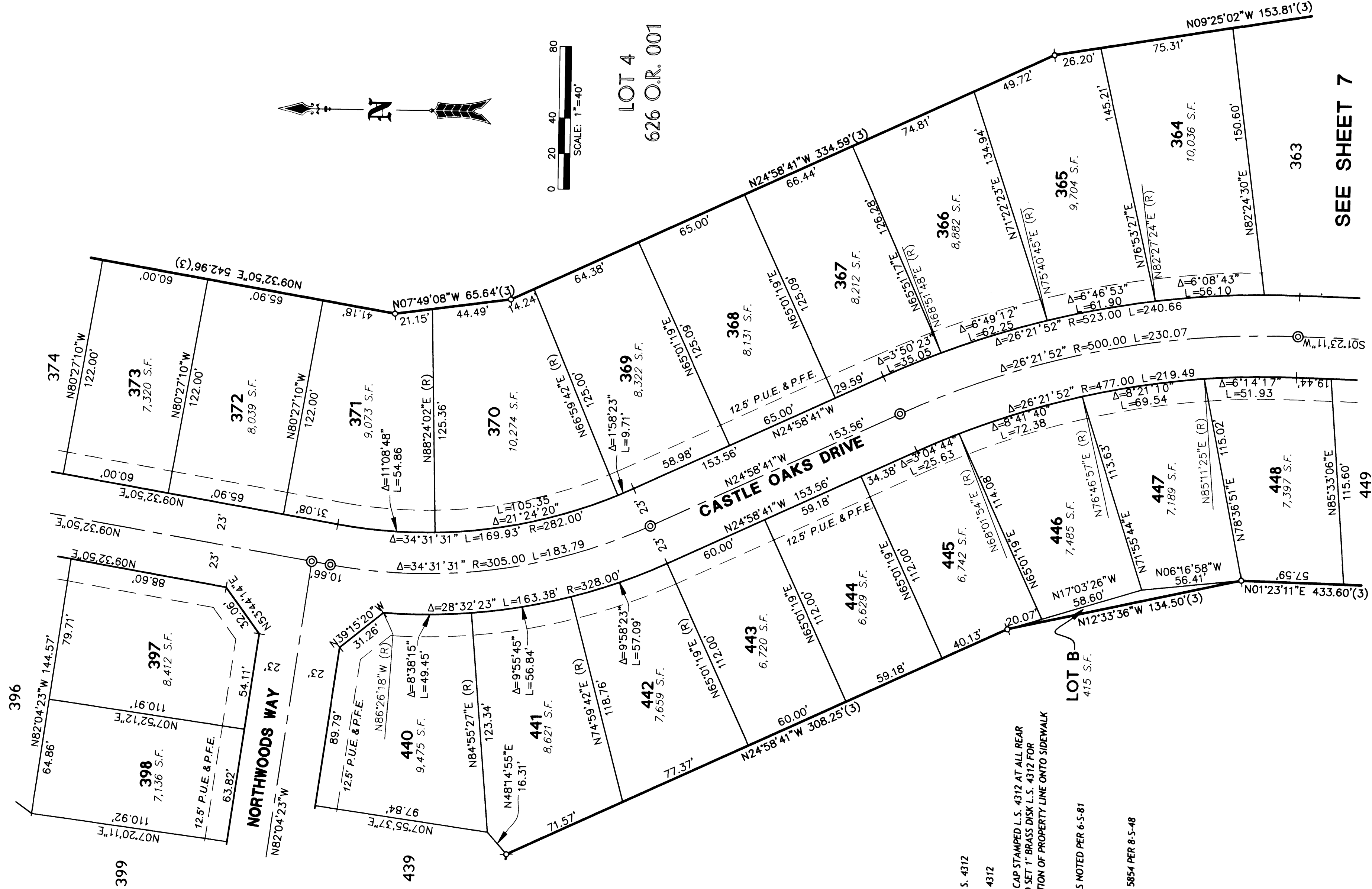


SEE SHEET 3

SEE SHEET 5



LOT 3  
626 O.R. 001

LOT 4  
626 O.R. 001

REFERENCES:

- (1) CASTLE OAKS UNIT NO. 1, 6-S-81
- (2) RECORD OF SURVEY 31-M-1
- (3) GRANT DEED, 626 O.R. 001
- (4) RECORD OF SURVEY 5-M-32
- (5) RECORD OF SURVEY 7-M-60
- (6) DOC NO. 2002-009452

LEGEND:

- ⊙ SET CONCRETE NAIL AND TAG, L.S. 4312
- ⊙ SET 2" IRON PIPE WITH TAG, L.S. 4312
- ⊙ SET 3/4" BY 18" LONG REBAR WITH CAP STAMPED L.S. 4312 AT ALL REAR LOT CORNERS, ANGLE POINTS AND SET 1" BRASS DISK L.S. 4312 FOR FRONT CORNERS AT 2.00' PROJECTION OF PROPERTY LINE ONTO SIDEWALK FOR FRONT CORNERS.
- △ FOUND CAL TRANS MONUMENT AS NOTED PER 6-S-81
- ⊙ FOUND MONUMENT AS NOTED
- ⊙ FOUND BRASS DISK STAMPED L.S. 5854 PER 8-S-48
- S.F. SQUARE FOOT
- P.U.E. PUBLIC UTILITY EASEMENT
- P.F.E. PUBLIC FACILITY EASEMENT
- (R) RADIAL LINE
- R&M RECORD AND MEASURED
- SFNF SEARCHED FOR NOT FOUND

NOTES:

1. TOTAL AREA OF THIS SUBDIVISION IS 44.16 ± ACRES, CONSISTING OF 168 RESIDENTIAL LOTS AND 10 MISCELLANEOUS LOTS.
2. ALL CURVES ARE DIMENSIONED WITH RADIUS, DELTA, AND ARC LENGTH. ALL DISTANCES ARE SHOWN IN FEET AND DECIMALS THEREOF.
3. LOTS A, B, D, E, F, G AND I SHOWN HEREON SHALL BE GRANTED IN FEE TO THE CITY OF IONE FOR OPEN SPACE PURPOSES.
4. LOT C, H AND J FOR ROAD, PUBLIC UTILITY, SEWER, DRAINAGE, AND TELEPHONE PURPOSES AND APPURTENANCES THERETO.
5. ALL LOTS ARE GRADED ABOVE THE F.E.M.A. 100 YEAR FLOOD PLANE AT ELEVATIONS SHOWN ON THE IMPROVEMENT PLANS FOR CASTLE OAKS VILLAGE 3.

FINAL SUBDIVISION MAP NO. 160  
CASTLE OAKS VILLAGE 3

A PORTION OF THE REMAINDER PARCEL AS SHOWN ON THE "FINAL MAP OF CASTLE OAKS UNIT NO. 1", FILED FOR RECORD ON JUNE 5, 1992 IN BOOK 6 OF SUBDIVISIONS, AT PAGE 81, OFFICIAL RECORDS OF AMADOR COUNTY

CITY OF IONE COUNTY OF AMADOR CALIFORNIA

NOVEMBER, 2006

NOTE

BEYOND ENGINEERING  
2000 MICHIGAN AVE. SUITE 200  
FARMINGTON, CT 06030  
WWW.BEYONDENGINEERING.COM

JOB NO. : SAB014807

SHEET 6 OF 11 SHEETS