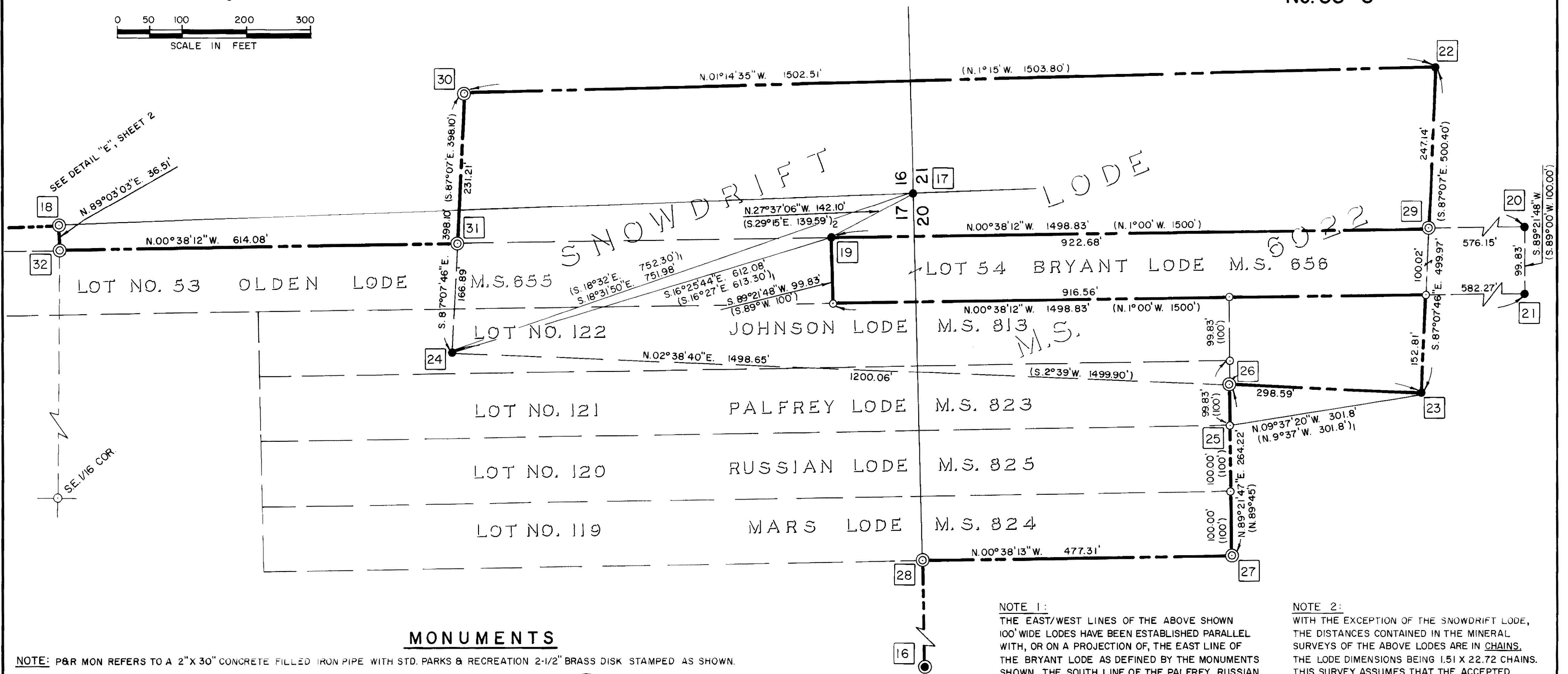
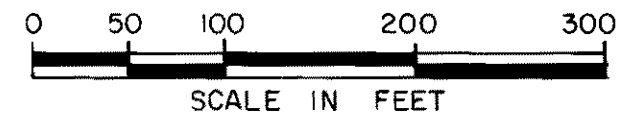


RECORD OF SURVEY

No. 33-6



MONUMENTS

NOTE: P&R MON REFERS TO A 2"X 30" CONCRETE FILLED IRON PIPE WITH STD. PARKS & RECREATION 2-1/2" BRASS DISK STAMPED AS SHOWN.

- 16 SEE DESCRIPTIONS SHEET 1 OF 3.
- 19 FOUND ROCK MOUND WITH 4"X4" POST ALONGSIDE, NO SCRIBING. RESET POST IN MOUND. NOTE: THIS POINT ERRONEOUSLY ACCEPTED BY OWENS' 1976 SURVEY AS SECTION CORNER.
- 20 FOUND 4.5' DIA. MOUND OF STONES.
- 21 FOUND 4' DIA. MOUND OF STONES.
- 22 FOUND 2" IRON PIPE, UP 2', STAMPED "S-3-6022 NN4" IN SMALL MOUND OF STONES PER M.S. 6022.
- 23 FOUND 2" IRON PIPE, UP 2.2', STAMPED "S-2-6022" PER M.S. 6022.
- 24 FOUND 2" IRON PIPE, BROKEN OFF UP 0.9'. BROKEN PORTION ALONGSIDE AND STAMPED "S-1-6022" PER M.S. 6022. ALSO ALONGSIDE IS 4"X4" POST SCRIBED "COR NO 1 S 1".
- 25 M.S. 6022, THE SNOWDRIFT LODGE, SURVEYED IN 1930, RECITES FINDING A MOUND OF ROCKS MARKING THE SOUTHWEST CORNER OF THE PALFREY LODGE (COR NO. 3). MADE DILIGENT SEARCH FOR THIS CORNER, FOUND NOTHING. POSITION ESTABLISHED FROM RECORD TIE FROM SOUTHWEST CORNER SNOWDRIFT LODGE, NOTHING SET.
- 26 1989 PROP COR LS4280 SET P&R MON, UP 0.5', IN MOUND OF STONES.

- 27 1989 SW MARS LS4280 SET P&R MON, UP 0.5'.
- 28 1989 S17 PROP S 20 COR LS4280 SET P&R MON, UP 0.5'.
- 29 1989 PROP COR LS4280 SET P&R MON, UP 0.5'.
- 30 1989 PROP COR LS4280 SET P&R MON, UP 1.0' IN LARGE MOUND OF STONES. ESTABLISHED AT RECORD DISTANCE FROM N.W. CORNER SNOWDRIFT ON LINE PARALLEL WITH SOUTH LINE THEREOF.
- 31 1989 PROP COR LS4280 SET P&R MON, UP 0.5'.
- 32 1989 PROP COR LS4280 SET P&R MON, UP 0.4'.

NOTE 1:
THE EAST/WEST LINES OF THE ABOVE SHOWN 100' WIDE LODES HAVE BEEN ESTABLISHED PARALLEL WITH, OR ON A PROJECTION OF, THE EAST LINE OF THE BRYANT LODGE AS DEFINED BY THE MONUMENTS SHOWN. THE SOUTH LINE OF THE PALFREY, RUSSIAN AND MARS LODES ESTABLISHED ALONG A LINE PERPENDICULAR TO SAID EAST LINE OF BRYANT AND PASSING THROUGH CALCULATED POSITION 25.

NOTE 2:
WITH THE EXCEPTION OF THE SNOWDRIFT LODGE, THE DISTANCES CONTAINED IN THE MINERAL SURVEYS OF THE ABOVE LODES ARE IN CHAINS. THE LODGE DIMENSIONS BEING 1.51 X 22.72 CHAINS. THIS SURVEY ASSUMES THAT THE ACCEPTED STANDARD CLAIM SIZE OF 100 X 1500 FEET WAS INTENDED TO BE REPRESENTED BY THESE CHAIN DISTANCES RATHER THAN THE FRACTIONAL DISTANCES THAT RESULT FROM AN EXACT CHAIN TO FEET CONVERSION.

LEGEND

- STATE HISTORIC PARK BOUNDARY.
- DIMENSIONAL POINT, NOTHING FOUND OR SET.
- SET MONUMENT AS DESCRIBED.
- FOUND MONUMENT AS DESCRIBED.
- 19 TABULATION INDEX NUMBER
- () DATA PER APPROPRIATE MINERAL SURVEY SHOWN ABOVE.
- ()₁ TIE PER MINERAL SURVEY 6022.
- ()₂ TIE PER MINERAL SURVEY 656.