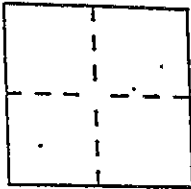


## CORNER RECORD

Document Number CR-614  
City of OAKLAND County of ALAMEDA, CaliforniaBrief Legal Description LOT 19 A REVISED MAP OF ROCKRIDGE PARK  
BLOCK 6 25 M 21

## CORNER TYPE

Government Corner ☐ Control ☐  
 Meander ☐ Property ☒  
 Rancho ☐ Other ☐  
 Date of Survey 2/4/92

COORDINATES  
(Optional)

N. \_\_\_\_\_  
 E. \_\_\_\_\_  
 Zone \_\_\_\_\_ Datum \_\_\_\_\_  
 Elev. \_\_\_\_\_

Corner — Left as found ☒ Found and tagged ☐ Established ☒ Reestablished ☐ Rebuilt ☐

Identification and type of corner found: Evidence used to identify or procedure used to establish or reestablish the corner:

Found points as shown on reverse.

A description of the physical condition of the monument as found and as set or reset:

Set points as shown on reverse.

## SURVEYOR'S STATEMENT

This Corner Record was prepared by me or under my direction in conformance with  
 the Land Surveyors' Act on June 19 19 95.

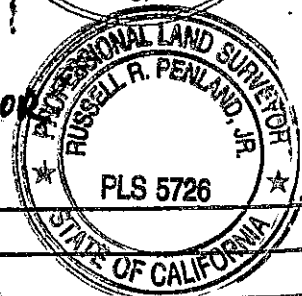
Signed [Signature] L.S. or R.C.E. Number 18546

## COUNTY SURVEYOR'S STATEMENT

This Corner Record was received 6-21- 19 95 and examined  
 and filed 11-20- 19 97.

Signed Russell R. Penland, Jr. Title DEPUTY COUNTY SURVEYOR

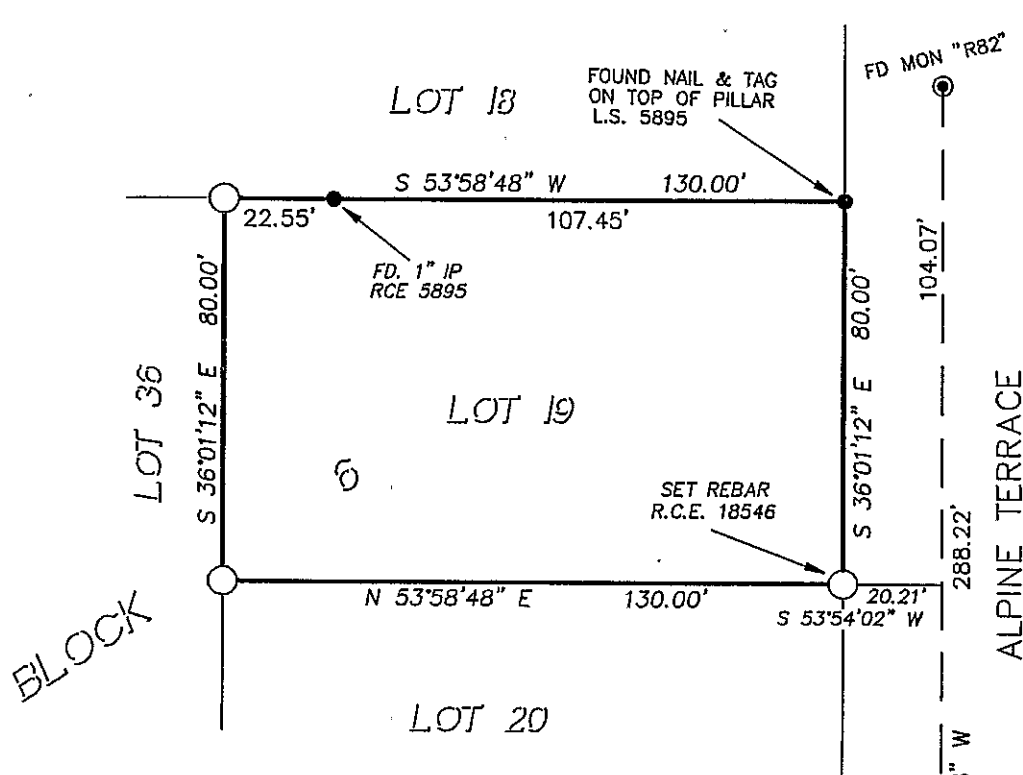
County Surveyor's Comment \_\_\_\_\_



# CORNER RECORD

LOT 19, BLOCK 6  
A REVISED MAP OF ROCKRIDGE PARK  
25 M 21

SCALE: 1"=40'



## LEGEND

- FOUND STANDARD STREET MONUMENT
- FOUND POINT AS NOTED
- SET 5/8" REBAR R.C.E. 18546
- ( ) RECORD DATA IN DISCREPANCY WITH FIELD

IVAN VEGVARY & ASSOCIATES  
CIVIL ENGINEER - LAND SURVEYOR  
40 TERRA TERESA  
LAFAYETTE, CA 94549  
(510) 947-1051