

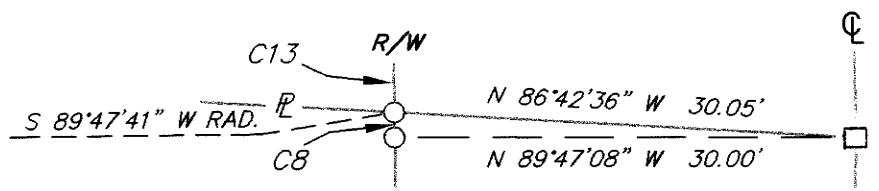
LEGEND

- (R) RECORD DATA PER 786/535 O.R., LLA 97-09 LEGAL DESCRIPTION
- (R1) RECORD DATA PER PMB 2/43
- (R2) RECORD DATA PER 300/279 O.R.
- (R3) RECORD DATA PER PMB 4/93
- (R4) RECORD DATA PER RS 37-62, RSMB 3/62
- (R5) RECORD DATA PER PMB 4/95
- (R6) RECORD DATA PER MB 10/46
- (M) MEASURED
- (C) CALCULATED
- AC NET ACREAGE EXCLUDING ROAD DEDICATION
- SET 5/8" DIA. 18" LONG MIN. REBAR AND CAP OR SPIKE AND WASHER STAMPED "L.S. 4587"
- ⊙ FOUND AND ACCEPTED REBAR AND CAP OR SPIKE AND WASHER STAMPED "L.S. 4587" PER R.S. 37-62
- FOUND MONUMENT PER MB 10/46 OR AS NOTED
- SET BRASS TAB MONUMENT STAMPED "LS 4587", IN MONUMENT WELL

CURVE & DRAINAGE DATA

CURVE TABLE			
CURVE	DELTA	LENGTH	RADIUS
C1	44°59'52"	117.80'	150.00'
C2	22°46'03"	99.34'	250.00'
C3	22°46'03"	99.34'	250.00'
C4	22°46'03"	99.34'	250.00'
C5	02°43'06"	23.72'	500.00'
C6	04°33'29"	39.78'	500.00'
C7	14°25'03"	62.91'	250.00'
C8	00°25'11"	1.61'	220.00'
C9	45°00'00"	141.37'	180.00'
C10	44°59'37"	94.23'	120.00'
C11	22°46'03"	111.26'	280.00'
C12	22°46'03"	87.42'	220.00'
C13	22°20'52"	85.81'	220.00'
C14	22°46'03"	111.26'	280.00'
C15	14°44'32"	56.61'	220.00'
C16	25°00'00"	231.26'	530.00'
C17	22°53'07"	187.73'	470.00'
C18	03°19'58"	27.34'	470.00'
C19	02°28'19"	20.28'	470.00'
C20	276°19'18"	217.02'	45.00'
C21	06°02'10"	55.84'	530.00'
C22	02°06'53"	17.35'	470.00'

DRAINAGE EASEMENT		
LINE	LENGTH	BEARING
L1	17.44	S00°46'00"E
L2	46.93	S48°39'46"E
L3	40.01	S63°02'40"E
L4	57.30	S43°01'00"E
L5	40.49	S50°56'19"E
L6	58.77	S36°41'00"E
L7	47.73	S26°48'22"E
L8	64.01	S23°20'56"E
L9	31.89	S25°03'14"E
L10	46.41	S46°07'22"E
L11	19.36	S58°09'00"E



FINAL MAP - RIMROCK RANCH
SWALL MEADOWS

TRACT MAP NO. 37-45

BEING A DIVISION OF A PORTION OF THAT PORTION DESIGNATED AS "REMAINDER" OF TRACT NO. 37-44 AS PER MAP RECORDED IN BOOK 10 PAGE 46 OF TRACT MAPS, IN THE OFFICE OF THE COUNTY RECORDER. LOCATED IN SECTION 24, TOWNSHIP 5 SOUTH, RANGE 30 EAST, M.D.B.&M, IN THE COUNTY OF MONO COUNTY, STATE OF CALIFORNIA

14.54 ACRES GROSS

BASIS OF BEARINGS

THE BASIS OF BEARING FOR THIS SURVEY IS THE WEST LINE OF PARCEL 1 OF PARCEL MAP NO. 37-83, SHOWN HEREON AS N 00°15'18" E, PER MAP RECORDED IN PARCEL MAP BOOK 2 AT PAGE 43, IN THE OFFICE OF THE MONO COUNTY RECORDER.