

COUNTY ENGINEER'S CERTIFICATE

I hereby certify that I have examined the within final map of Tract No. 3574; that the subdivision shown thereon is substantially the same as it appeared on the approved tentative map and any approved alterations thereof as approved by the State Planning Commission on the 22<sup>nd</sup> day of July, 1963; that all provisions of the California Subdivision Map Act and of any local ordinances applicable at the time of approval of the tentative map have been complied with and that I am satisfied that said map is technically correct.

Dated: 22 Oct, 1963.

JAMES T. POTT, COUNTY ENGINEER

by: DEPUTY Alan Brown

CITY CLERK'S CERTIFICATE

I hereby certify that the within final map of Tract No. 3574 was approved by the City Council of the City of Sunnyvale, State of California, at a regular and duly authorized meeting of said Council held on the 16<sup>th</sup> day of October, 1963; that all streets and portions of said streets are herein not accepted and that all easements as shown on said map within said subdivision and offered for dedication are hereby accepted on behalf of the public except the sanitary sewer easements and storm drainage easements which are hereby not accepted, and that the 1 ft. strips "in fee" offered for public use and shown on said map are hereby accepted on behalf of the public.

CITY CLERK & EX-OFFICIO CLERK OF THE CITY COUNCIL, SARATOGA, CALIFORNIA

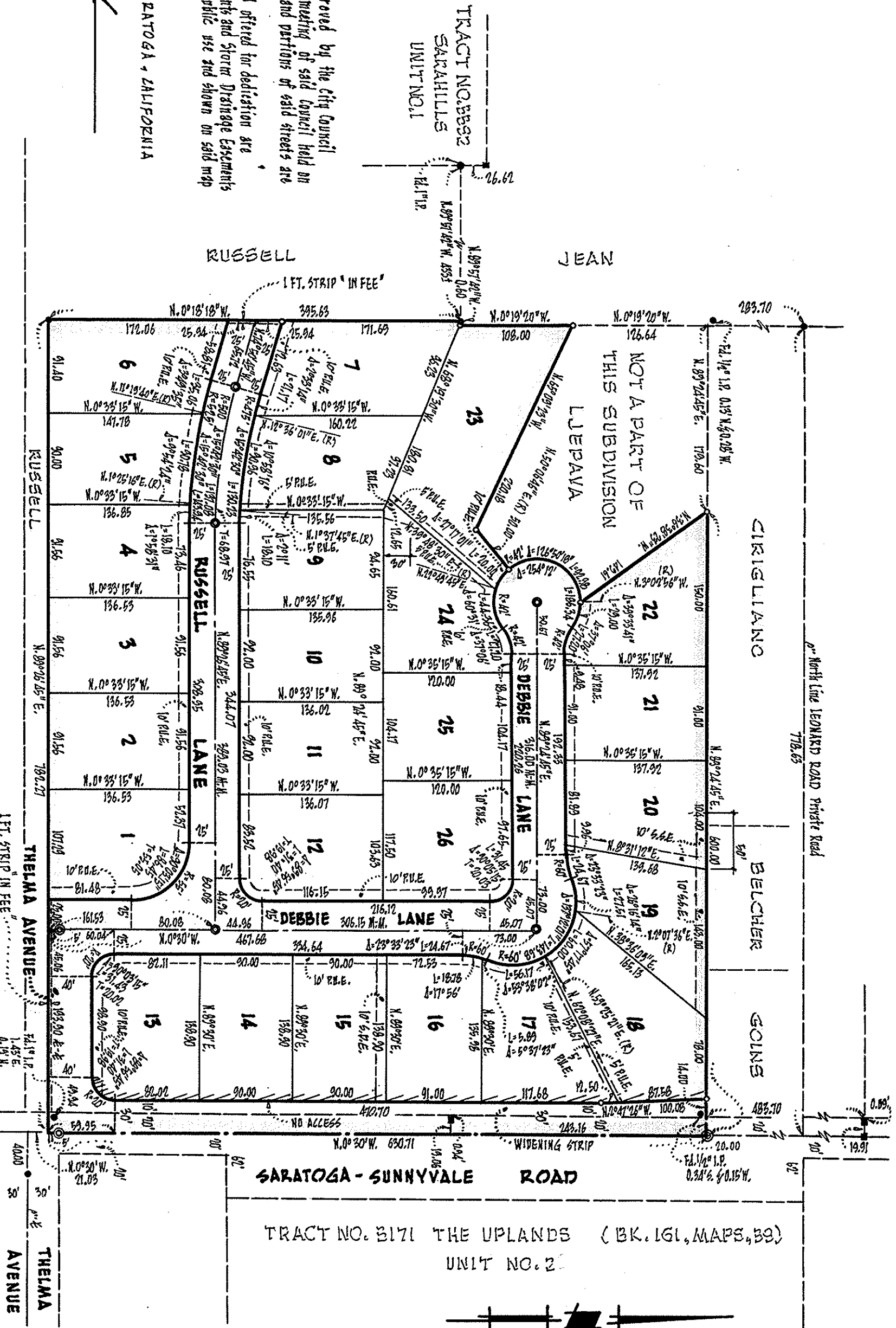
William C. Stanley

RECORDED'S CERTIFICATE

FILE NO. 2507290 Fee \$5.00 paid. 38  
Accepted for recording in Book 168 of Maps of 1964 at 4:03 P.M. Santa Clara County Records, this 24<sup>th</sup> day of October, 1963.

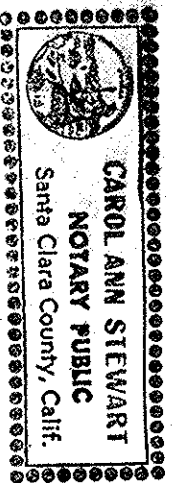
PAUL R. TEICH, COUNTY RECORDER

by: DEPUTY Ann Anderson



NOTES & LEGEND:

- indicates 3/4" iron pipe found unless noted otherwise.
  - indicates 3/4" iron pipe set.
  - ◎ indicates 4" standard street monument to be set.
  - indicates granite monument found.
- All distances and dimensions are given in feet and decimals thereof. The blue border line indicates the boundary of lands subdivided by this map. The 4" P.C.'s lie equally 2' on each side of the lot line unless noted otherwise.



OWNER'S CERTIFICATE

We hereby certify that we are the owners of or have some right, title or interest in and to the real property included within the subdivision shown upon the herein map; that we are the only persons whose consent is necessary to pass a clear title to said real property; that we hereby consent to the making of said map and subdivision as shown within the blue border line and that we hereby dedicate to public use all streets and portions of streets not heretofore existing as shown on said map within said subdivision. We also hereby dedicate to public use easements for public utilities and for sanitary sewers, water, gas or other those certain strips of land lying between the lines of lots and the dashed lines and designated as "P.U.E." Public Utility Easement and/or "S.A.E." Sanitary Sewer Easement; easement under, on or over those certain strips of land delineated and designated as "A.E." Author Easement, and easements for fire clearance purposes only over those certain areas designated and delineated as "W.A.E." Wide Clearance Easement as shown on said map within said subdivision. Public Utility, Sanitary Sewer and Author Easements to be kept open and clear of buildings and structures of any kind except lawful fences and utility company structures. Wide Clearance Easements to be limited to buildings, structures and appurtenances therein which have a maximum height of fifteen feet(5) above the grade at the ground line of poles. We also dedicate to public use the certain strips of land designated as "1 FT. STRIP" "IN FEE" as shown by a dashed line upon said map of said subdivision. We also hereby relinquish to the City of Sunnyvale and all rights of ingress and egress over and across the rear and/or side lines of the abutting Saratoga-Sunnyvale Road designated as "W. Access" on the herein map and shown thereby. We also dedicate for storm drainage purposes only the certain strips of land designated as "S.D.E." Storm Drainage Easement, as shown on said map of said subdivision.

MARVIE CONSTRUCTION COMPANY, a corporation, OWNER

by: Edward J. Mott by: Emily J. Mott

VALLEY TITLE COMPANY OF SANTA CLARA COUNTY, a corporation, OWNER

by: Frank J. Mott by: Emily J. Mott

VALLEY TITLE COMPANY OF SANTA CLARA COUNTY, a corporation, TRUSTEES  
STATE OF CALIFORNIA, by: Frank J. Mott Vice-President  
COUNTY OF SANTA CLARA, by: Emily J. Mott Secretary  
On this 24<sup>th</sup> day of October, 1963, before me, the undersigned, a Notary Public in and for said County and State, personally appeared Frank J. Mott and Emily J. Mott, known to me to be the President and Secretary respectively of MARVIE CONSTRUCTION COMPANY, the corporation that executed the within instrument and also known to me to be the persons who executed it on behalf of said corporation and acknowledged to me that said corporation executed the same pursuant to its bylaws or a resolution of its board of directors as OWNER.

NOTARY PUBLIC Carol Ann Stewart

STATE OF CALIFORNIA, by: Frank J. Mott On this 24<sup>th</sup> day of October, 1963, before me, the undersigned, a Notary Public in and for said County and State personally appeared Frank J. Mott and Emily J. Mott, known to me to be the Vice-President of the corporation that executed the within instrument and also known to me to be the person who executed it on behalf of said corporation and acknowledged to me that said corporation executed the same as OWNER & TRUSTEE.

NOTARY PUBLIC Carol Ann Stewart

CITY ENGINEER'S CERTIFICATE

I, Donald G. McKay, hereby certify that I am a Registered Civil Engineer of the State of California; that this map, consisting of one sheet, correctly represents a survey made under my supervision during August, 1963; that the survey is true and complete as shown; that all monuments shown herein actually exist or will be placed on or before November, 1963; that the position of said monuments are correctly shown and that said monuments are sufficient to enable the survey to be retraced.

DONALD G. MCKAY, R.E. 7164

Donald G. McKay

TRACT NO. 3574

CONSISTING OF ONE SHEET  
BEING A PORTION OF THE QUITO RANCHO AND LYING WITHIN THE CITY OF  
SARATOGA, CALIFORNIA

SCALE: 1"=100'

AUGUST, 1963

SHEET 1 OF 1 SHEET

MCKAY & SONS CIVIL ENGINEERS 547 COMMERCIAL SAN JOSE 2484