

CORNER RECORD

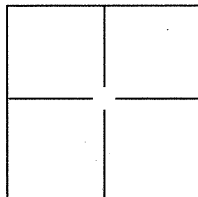
BK 79 PG 22

Document Number CR7556

City of Fremont

County of Alameda, California

Brief Legal Description Per section 8771(b) of the Professional Land Surveyor's Act, this corner record is being submitted prior to destruction during the course of construction.



CORNER TYPE

Government ☐ Control ☐
 Corner Meander ☐ Property ☐
 Rancho ☐ Other ☐

Date of Survey 8/3/2015

COORDINATES(Optional)

N. 2009055.200
 E. 6136716.460
 Zone 3 NAD27 ☐ NAD83 ☒
 NAD83 Epoch 2010
 Elev. N/A
 Vert. Datum: NGVD29 ☐ NADV88 ☐
 Meas. Units: Metric ☐ Imperial ☐

Corner - Left as found ☒ Found and tagged ☐ Established ☐ Reestablished ☐ Rebuilt ☐

Identification and type of corner found: Evidence used to identify or procedure used to establish or reestablish the corner: Found street monument at the southeast part of the Brandin Court "bulb".

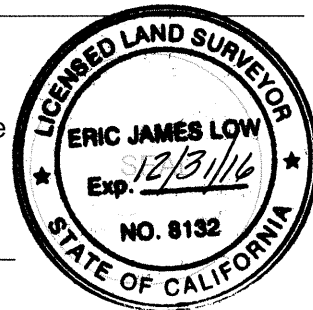
Found 2.5" brass disk stamped "CITY OF FREMONT RE 3017?" The last number was not readable but the disk was stable. Brass disk was set within a standard street monument casing, on a cement pedestal and punched for location. Monument was occupied and cut crosses were set in a typical "cross" pattern used for radial ties when the monument will be reestablished.

A description of the physical condition of the monument as found and as set or reset: Monument was found in "good" condition, stable but the last RE number was not readable.

SURVEYORS STATEMENT

This Corner Record was prepared by me or under my direction in conformance with the Land Surveyors Act on MARCH 16, 2016.

Signed Eric James Low P.L.S. or R.C.E. No.: 8132



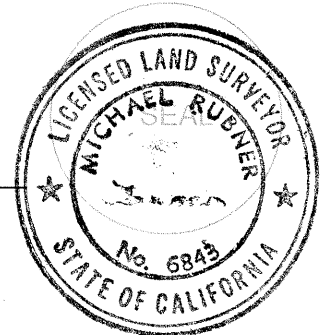
COUNTY SURVEYORS STATEMENT

This Corner Record was received 2 OCTOBER, 2016
 and examined and filed 20 APRIL, 2016.

Signed Michael Rubner P.L.S. or R.C.E. No.: 6843

Title COUNTY SURVEYOR

County Surveyors Comment _____



N 2009055.200
E 6136716.460

TL31K1

FOUND CITY MONUMENT WITH
2.5" BRASS DISK STAMPED
"CITY OF FREMONT RE NO. 3017?"

SET "X" IN CONCRETE
DRIVEWAY APRON

SET "X" ON CURB

SET "X" IN CONCRETE
DRIVEWAY APRON

SET "X" ON CURB

DETAIL "A"

1"=50'

LEGEND

● FOUND STREET MONUMENT

⊙ SET "X" IN CONCRETE

AA##A# ALAMEDA COUNTY MONUMENT I.D.

