

# PARCEL MAP

This is a copy of a map on file in the Recorder's Office of Alameda County. No representation of any kind is made as to the accuracy of the original official map from which this is copied, and this copy carries with it no representation of any kind other than that it is a copy.

Any questions concerning this map should be directed to the Recorder's Office of Alameda County.

DIETERICH POST COMPANY

## OWNER'S CERTIFICATE

The undersigned, owner of the land within the blue lines of the herein embodied map, consents to the preparation and recordation of this map.

JAN 22, 1969 Date

Thomas R. Lyons

## SURVEYOR'S CERTIFICATE

This map was prepared by me or under my direction and was compiled from record data and is based upon a field survey in conformance with the requirements of the Subdivision Map Act at the request of Thomas R. Lyons on Jan. 3, 1969. I hereby certify that it conforms to the approved tentative map and the conditions of approval thereof; that all provisions of applicable state law and local ordinances have been complied with.

William R. Bates  
Registered Civil Engineer #6244

## CITY ENGINEER'S CERTIFICATE

This map has been examined this 8th day of April 1969, for conformance with the requirements of Section 11575 of the Subdivision Map Act. This map meets the requirements of the Planning Board and the City Council.

M. J. Hanna  
City Engineer, City of Alameda

★ USE WITH CAUTION ★

THIS IS A PUBLIC WORKS DEPARTMENT WORKING COPY OF AN OFFICIAL MAP ON FILE IN THE OFFICE OF THE COUNTY RECORDER, COUNTY OF ALAMEDA. OFFICE INFORMATION OR CALCULATIONS MAY HAVE BEEN ADDED HEREON.

44-4393

## RECORDER'S CERTIFICATE

Filed this 22nd day of April 1969, at 10:55 a.m. in Book 58 of Parcel Maps at Page 99 of the request of Mark J. Hanna.

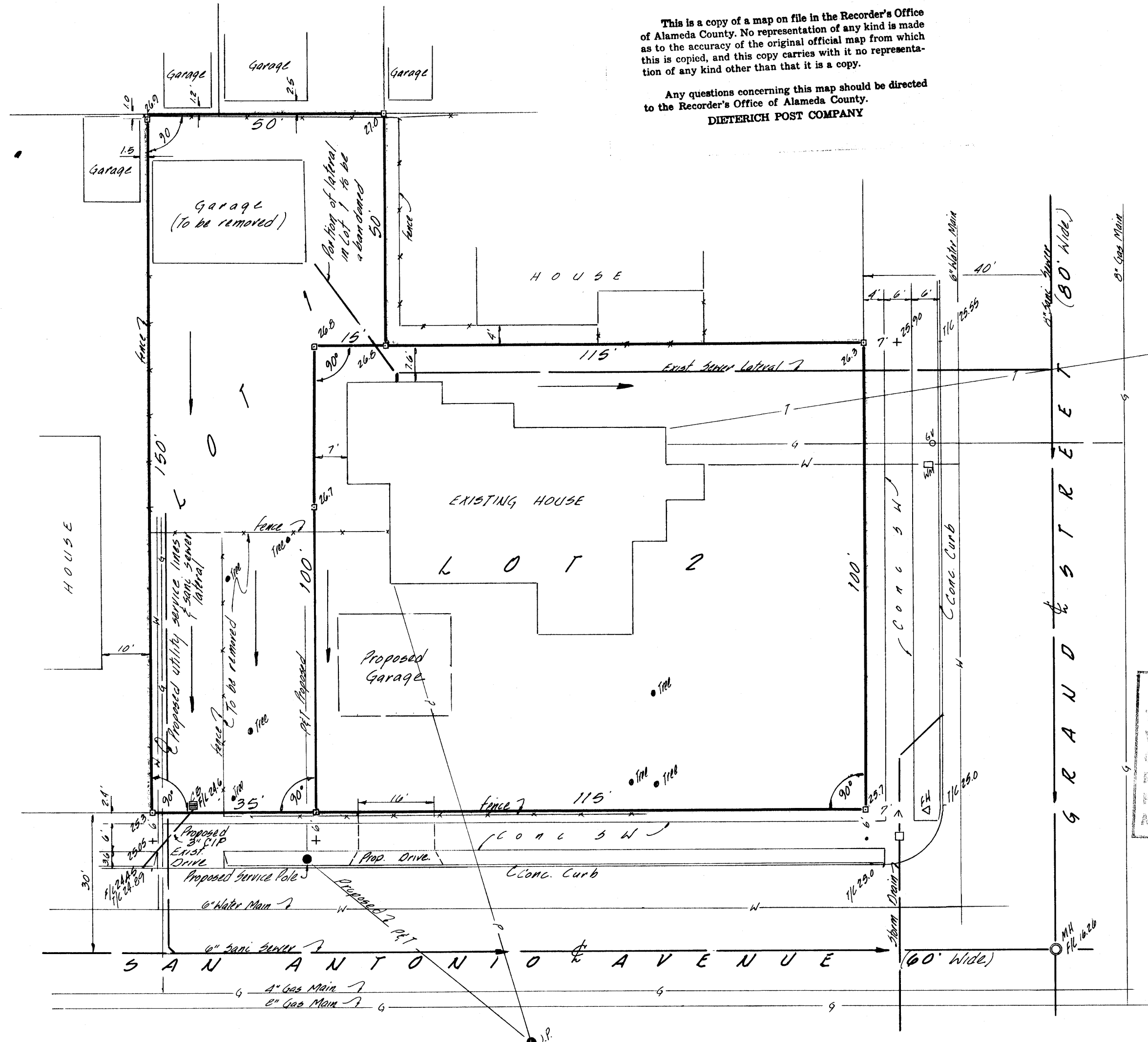
\$500

Jack G. Blue  
County Recorder

By J. B. Blass  
Deputy County Recorder

23B 30D

DR 58 Pg 99



## NOTES

Elevations based on City of Alameda Datum.

Lot drainage shall be to the satisfaction of the City Engineer. No drainage shall cross interior property lines.

Roof leaders from existing house shall be permanently disconnected from sanitary sewer system.

## LEGEND

- CL Center Line
- MH Manhole
- FL Flow Line
- TL Top of Curb
- SW Side Walk
- FH Fire Hydrant
- WM Water Meter
- GV Gas Valve
- JP Joint Pole
- P Power Line
- T Telephone Line
- Indicates 2x2 hub set
- + Indicates cut in conc.
- Indicates nail set in conc.
- Indicates proposed direction of surface drainage

## PARCEL MAP NO. 425

A DIVISION OF PROPERTY AT THE NORTHWEST CORNER OF GRAND ST. AND SAN ANTONIO AVE. ALAMEDA, CALIFORNIA

FOR: THOMAS R. LYONS

BY: BATES AND BAILEY C.E. & L.S.

DATE: Jan. 1969 SCALE: 1" = 20' SHEET 1 of 1