

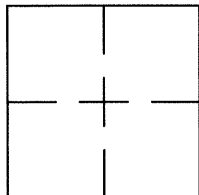
CORNER RECORD

Document Number CR 7346

City of OAKLAND

County of ALAMEDA, California

Brief Legal Description WELL MONUMENT LOCATED WITHIN MACARTHUR BLVD AND ARDLEY AVE..



CORNER RECORD

Government Corner ☐ Control ☒
Meander ☐ Property ☐
Rancho ☐ Other ☐
Date of Survey 6/4/15

COORDINATES
(Optional)

N. _____
E. _____
Zone _____ Datum _____
Elev. _____

Corner — Left as found ☒ Found and tagged ☐ Established ☐ Reestablished ☐ Rebuilt ☐

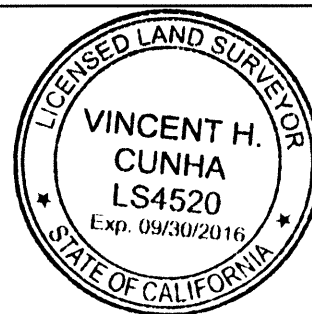
Identification and type of corner found: Evidence used to identify or procedure used to establish of reestablish the corner:
FOUND IRON PIN IN WELL MONUMENT IN INTERSECTION OF MACARTHUR BLVD & ARDLEY AVE..
AS SHOWN ON CITY OF OAKLAND MONUMENT MAP, PAGE 207.
NO CITY MONUMENT DESIGNATION NUMBER AT SUBJECT LOCATION.
THIS POINT WAS FOUND IN GOOD CONDITION AFTER A CONSTRUCTION PROJECT IN THE VICINITY.

A description of the physical condition of the monument as found and as set or reset: _____
FOUND POINTS AS SHOWN ON PAGE 2.

THESE TIES ARE FOR THE PURPOSE OF PERPETUATING THE FOUND MONUMENTATION.
NO CLAIM IS MADE AS TO THE RELATIONSHIP OF THE POINTS OR LINES SHOWN HEREON
TO TRUE BOUNDARY LOCATIONS.

SURVEYOR'S STATEMENT

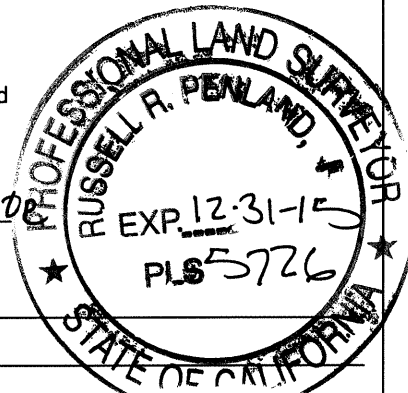
This Corner Record was prepared by me or under my direction in conformance with
the Land Surveyors' Act of JUNE 9, 20 15.
Signed Vincent H. Cunha L.S. Number LS 4520
VINCENT H. CUNHA



COUNTY SURVEYOR'S STATEMENT

This Corner Record was received 6-11-15 and examined
and filed 7-10-2015
Signed Russell R. Penland Title COUNTY SURVEYOR

County Surveyor's Comment SEE PRE-CONSTRUCTION CR 6420

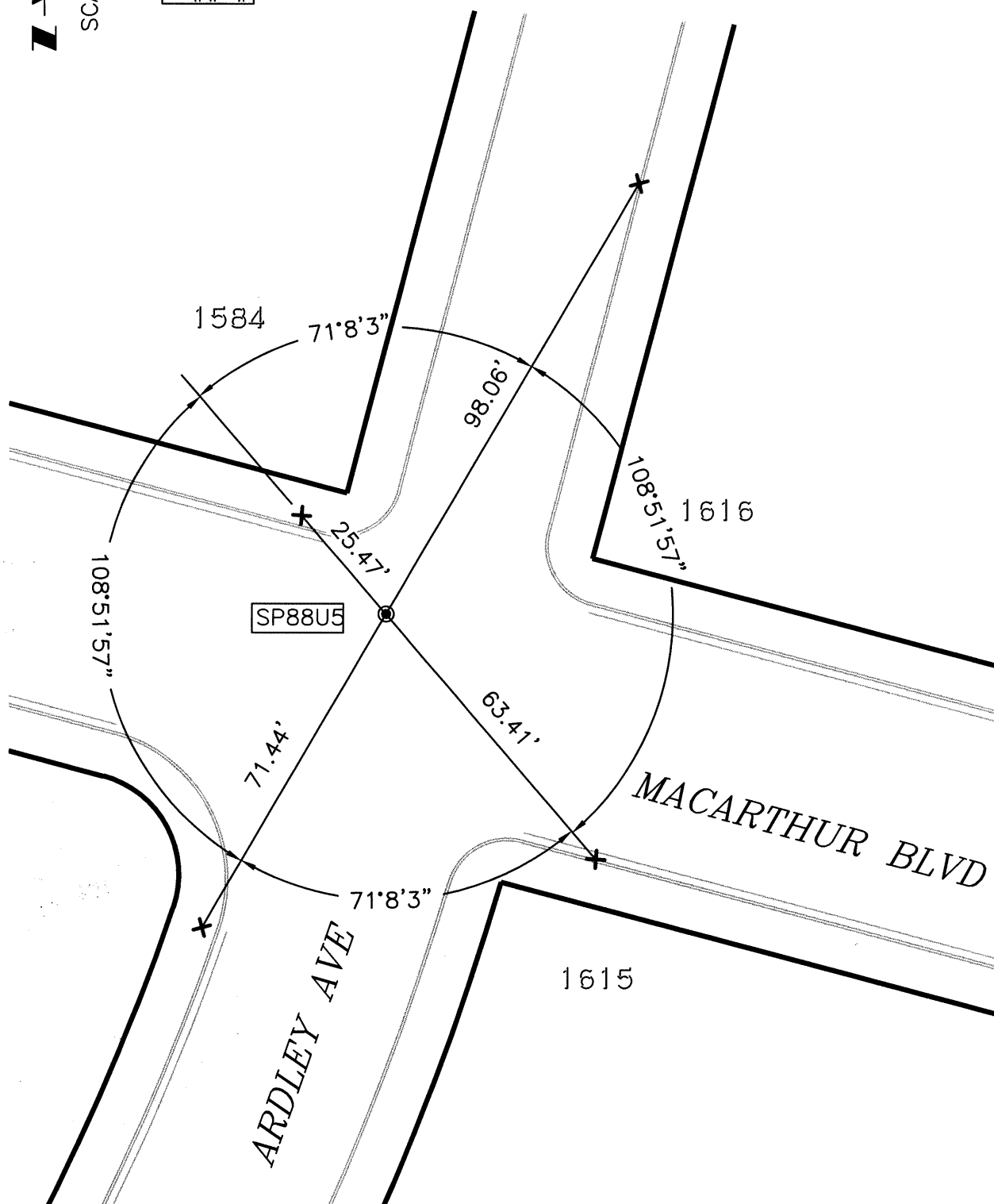




SCALE: 1"=30'

LEGEND

- FOUND IRON PIN IN MONUMENT WELL
- ✕ FOUND CUT CROSS IN CONCRETE
- AA##A# ALAMEDA COUNTY MONUMENT ID



214072-ARDLEY-CR1-POST