

GENERAL NOTES

- A. GENERAL CONTRACTOR TO COORDINATE AND SCHEDULE SIGNAGE INSTALLATION WITH THE SIGNAGE CONTRACTOR PROVIDING A MINIMUM SCHEDULING NOTICE OF 4 WEEKS AND 1 WEEK PRIOR TO SCHEDULED DATE OF INSTALLATION. CONSTRUCTION MANAGER TO PROVIDE GENERAL CONTRACTOR WITH SIGNAGE CONTRACTOR CONTACT INFORMATION.
- B. GENERAL CONTRACTOR SHALL COORDINATE ELECTRICAL CONTRACTOR TO FURNISH AND INSTALL ELECTRICAL CIRCUITS INCLUDING ALL CONDUIT, WIRE, CONNECTIONS AND BREAKER AT PANEL BOARD NECESSARY TO SERVE SIGNAGE.
- C. SIGNAGE CONTRACTOR TO INSTALL SIGNAGE IN COMPLIANCE WITH LOCAL CODES AND OBTAIN PERMIT.

KEYED NOTES

- NON-ILLUMINATED PROTECTIVE BOLLARD
- ELECTRICAL METER
- SERVICE DOOR
- PRE-FINISHED METAL COPING, TYPICAL
- OUTLINE OF ROOF BEYOND
- DT WINDOW: PROVIDE READY ACCESS 800 SERIES SINGLE PANEL SLIDER WITH MOER, LOW E INSULATED GLASS AND 16" SPLIT TRANSOM. USE WITH AA100 AIR CURTAIN. WINDOW AND AIR CURTAIN FINISH TO MATCH ADJACENT STOREFRONT.
- DT WINDOW SHELFF: INSTALL SERVICE WINDOW SHELFF AT 36" AFF INSIDE AND 42" AFF OUTSIDE, AS MEASURED ABOVE THE DT SURFACE.
- PRE-FABRICATED METAL CANOPY INSTALLED BY GC. BASIS OF DESIGN: "SUPER LUMIDECK" BY MAPES ARCHITECTURAL CANOPIES. GC TO COORDINATE WITH CANOPY VENDOR.
- CANOPY DOWNSPOUTS: CONNECT TO UNDERGROUND STORM DRAIN.
- ROOF SCUPPER AND EMERGENCY OVERFLOW: CONNECT VERTICAL LEADERS TO UNDERGROUND STORM DRAIN.
- FUTURE SIGNAGE BY OTHERS (SHOWN FOR REFERENCE ONLY).
- PROVIDE J-BOX WITH PULL STRING FOR FUTURE BUILDING SIGNAGE. COORDINATE LOCATION WITH SIGN VENDOR.
- PROVIDE 3/4" MARINE GRADE PLYWOOD BLOCKING FOR EXTERIOR SIGNAGE. EXTEND BLOCKING 8" MINIMUM BEYOND EDGES OF SIGNAGE.
- EXTERIOR SCENCE LIGHTING
- EXTERIOR EGRESS LIGHTING
- EXTERIOR SECURITY LIGHTING.
- LOCKABLE HOSE BIB, SEE PLUMBING DRAWINGS
- GAS METER, SEE PLUMBING SHEETS FOR ADDITIONAL INFORMATION.
- NOT USED.
- PROVIDE RECESSED LIGHTING IN DT CANOPY.
- ROOF ACCESS LADDER, SEE DETAILS ON A5003.
- CLEVIS AND TIE-ROD BY CANOPY MANUFACTURER INSTALLED BY CONTRACTOR.
- CEMENT PLASTER CONTROL JOINT. SEE DETAILS ON A5001.

EXTERIOR FINISH SCHEDULE		
FINISH ID	DESCRIPTION	SPECIFICATIONS
MTL-1	PREFINISHED COPING	PRE-FINISHED COLOR: MATCH RAL#7021 MATTE MT0028 - "FLAT BLACK"
MTL-3	H.M. DOOR AND FRAME	COLOR: MATCH RAL#7021 MATTE MT0028 - "FLAT BLACK"
MTL-4	METAL CANOPY	POWDERCOAT COLOR: MATCH RAL#7021 MATTE MT0028 - "FLAT BLACK" UNDERSIDE OF CANOPIES TO VARY. COORDINATE FINAL FINISH SELECTIONS WITH ARCHITECT.
MTL-5	METAL DOWNSPOUT	COLOR: MATCH RAL#7021 MATTE MT0028 - "FLAT BLACK"
MTL-6	ROOF ACESS LADDER	COLOR: MATCH RAL#7021 MATTE MT0028 - "FLAT BLACK"
SF-1	ANNODIZED STOREFRONT	COLOR: MATCH RAL#7021 MATTE MT0028 - "FLAT BLACK"
SP-3	STUCCO, FINE FINISH	CEMENT PLASTER SYSTEM COLOR: MATCH SW7504 KEYSTONE GRAY
SP-4	STUCCO, FINE FINISH	CEMENT PLASTER SYSTEM COLOR: MATCH SW7026 GRIFFIN
WD-5	FIBER CEMENT PANEL	NICHIHA VINTAGE WOOD COLOR: BARK; AWP 1818
SCRN-1	ROOFTOP EQUIPMENT SCREEN	PAINTED: P577 (SW7019)

REV	DATE	DESCRIPTION

WHITSETT
6405 BURLINGTON RD
WHITSETT, NC 27377

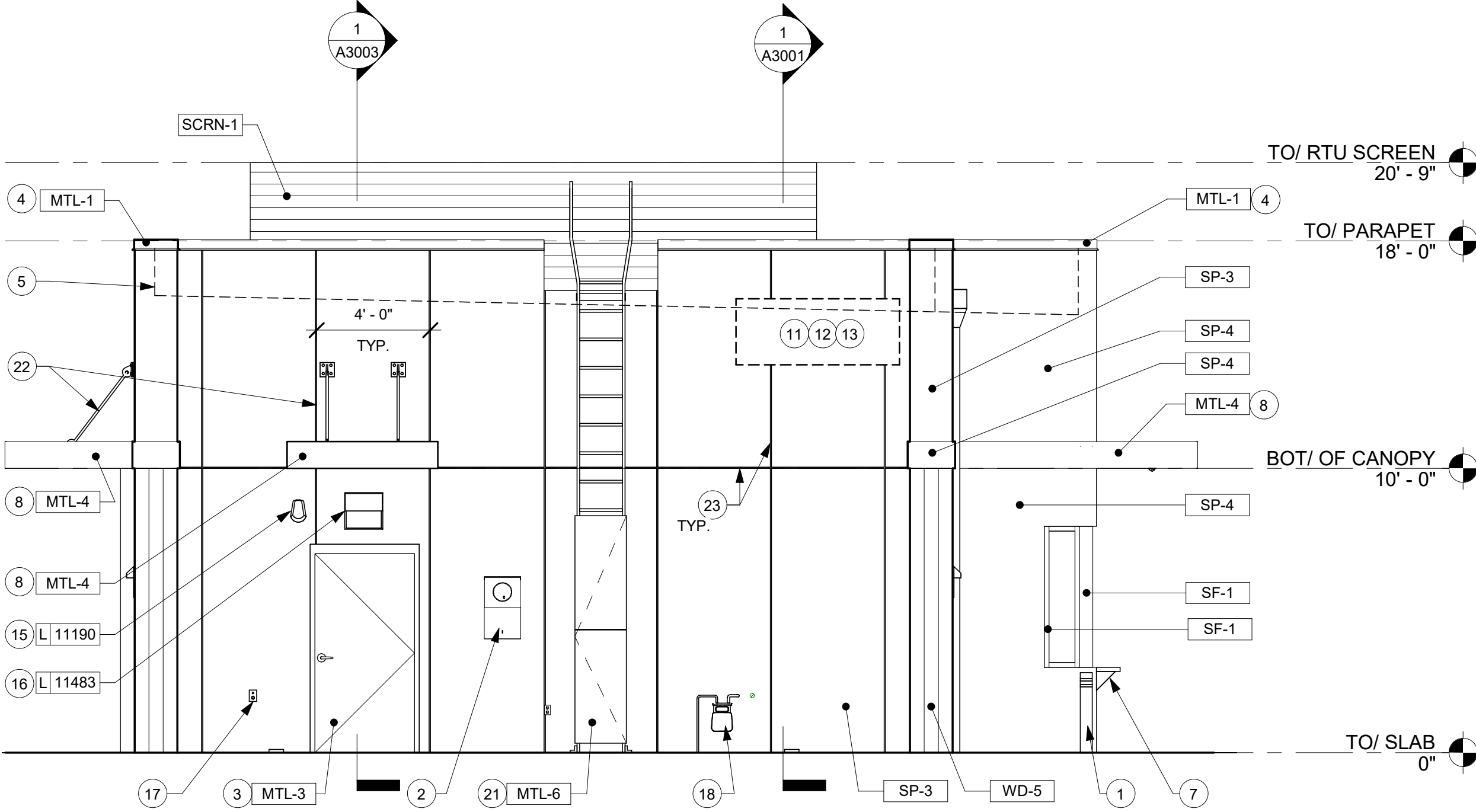
EXTERIOR ELEVATIONS

	DATE
PERMIT	--/------
BID	--/------
CONSTRUCTION	--/------
RECORD	--/------

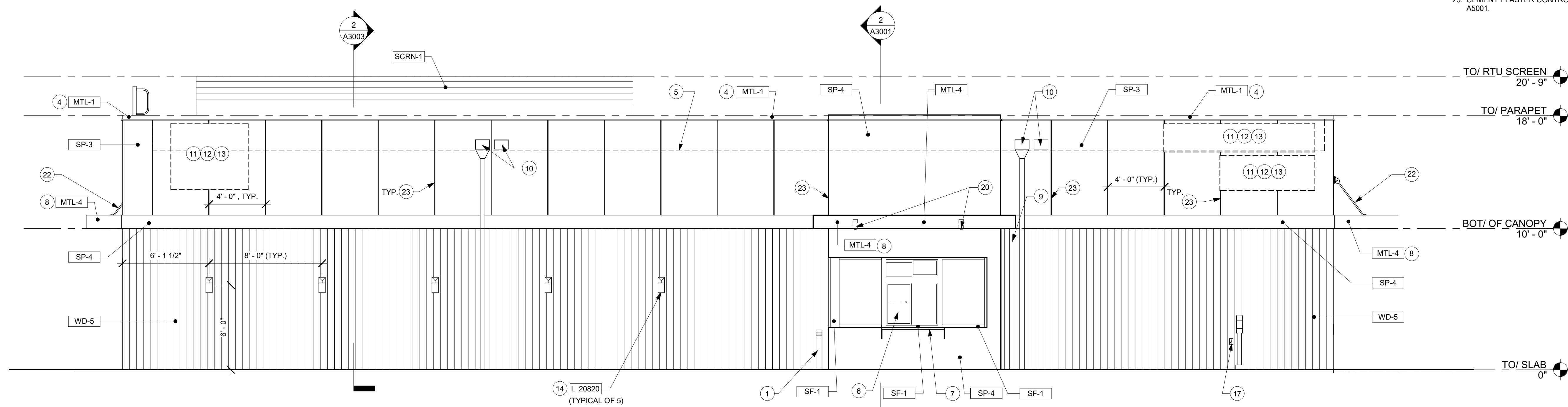
PROJECT MANAGER	DESIGNER
AK	DB

JOB NO.
2020379.16

A2002



2 NORTH ELEVATION
Scale: 1/4" = 1'-0"



1 WEST ELEVATION
Scale: 1/4" = 1'-0"