

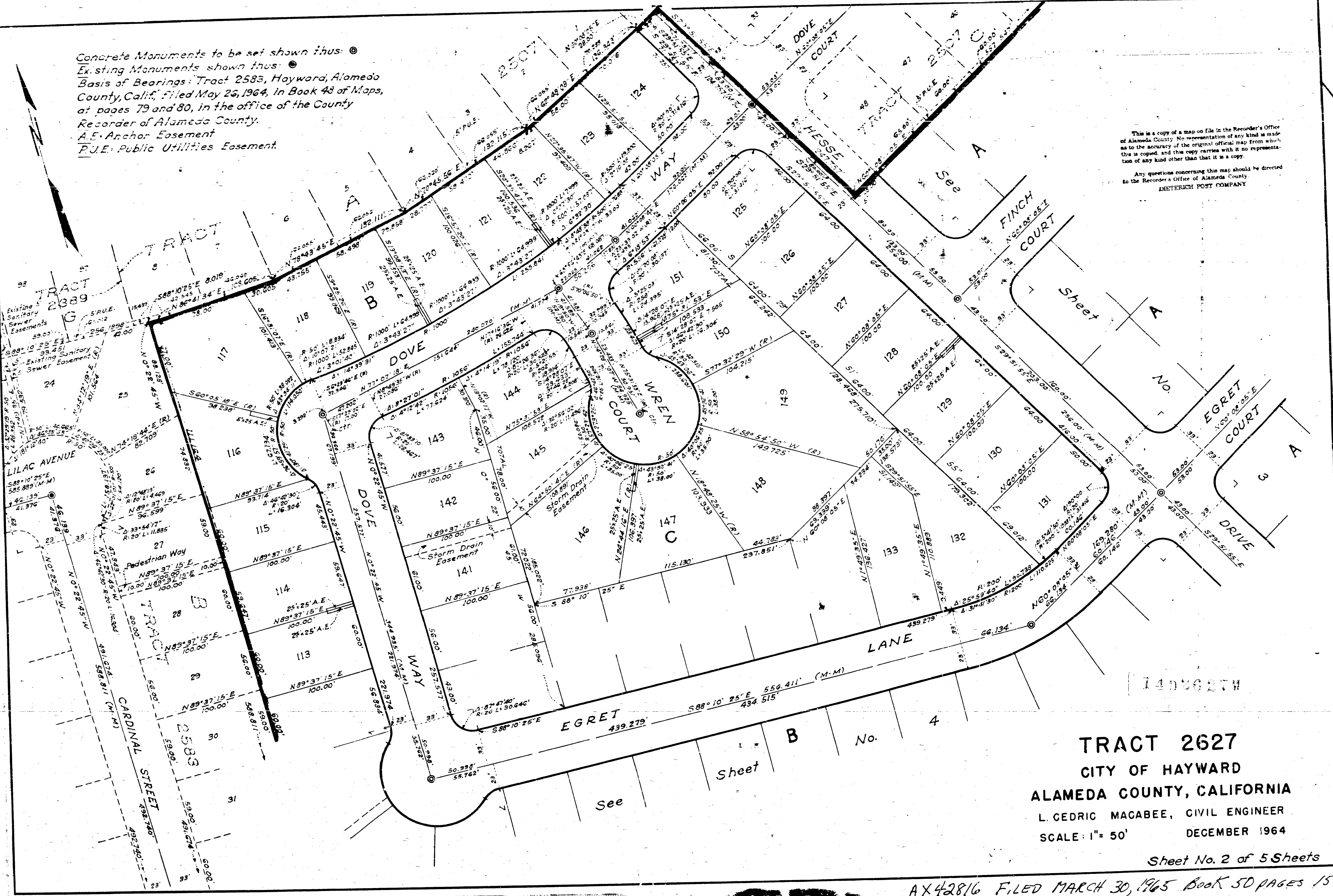
50 ~ 15 to 17

50 / 15-17

TR 2627

Concrete Monuments to be set shown thus: ●
Existing Monuments shown thus: ○
Basis of Bearings: Tract 2583, Hayward, Alameda County, Calif., Filed May 26, 1964, in Book 48 of Maps, at pages 79 and 80, in the office of the County Recorder of Alameda County.
A.E. Anchor Easement
P.U.E. Public Utilities Easement.

This is a copy of a map on file in the Recorder's Office of Alameda County. No representation of any kind is made as to the accuracy of the original official map from which this is copied, and this copy carries with it no representation of any kind other than that it is a copy.
Any questions concerning this map should be directed to the Recorder's Office of Alameda County.
INTERURCH POST COMPANY



TRACT 2627
CITY OF HAYWARD
ALAMEDA COUNTY, CALIFORNIA
L. CEDRIC MACABEE, CIVIL ENGINEER
SCALE: 1" = 50'
DECEMBER 1964

Sheet No. 2 of 5 Sheets

AX42816 FILED MARCH 30, 1965 BOOK 50 PAGES 15 TO 17

470