

# CORNER RECORD

Agency Index

BK 98 PL 40

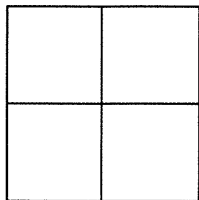
Document Number

CR 10131

City of BERKELEYCounty of ALAMEDA, CaliforniaBrief Legal Description PIN MONUMENT LOCATED WITHIN THE INTERSECTION OF SONOMA AVENUE  
TULARE AVENUE

## CORNER TYPE

## COORDINATES (Optional)



Government Corner	<input type="checkbox"/>	Control	<input checked="" type="checkbox"/>
Meander	<input type="checkbox"/>	Property	<input type="checkbox"/>
Rancho	<input type="checkbox"/>	Other	<input type="checkbox"/>

N. \_\_\_\_\_ E. \_\_\_\_\_

Elevation 192.49Units Metric ☐ U.S. Survey Foot ☒

Horizontal Datum \_\_\_\_\_

Zone \_\_\_\_\_ Epoch Date \_\_\_\_\_

Vertical Datum CITY OF BERKELEY☐ Complies with Public Resources Code §§8801-8819☐ Complies with Public Resources Code §§8890-8902PLS Act Ref: ☐ 8765(d)☒ 8771☐ 8773☐ Other:Corner/  
Monument: ☒ Left as found☐ Established☐ Rebuilt☒ Pre-Construction☐ Found and tagged☐ Reestablished☐ Referenced☐ Post-Construction

Narrative of corner identified and monument as found, set, reset, replaced, or removed:

☒ See sheet #2 for description(s) :

FOUND 3/8" IRON PIN IN CONCRETE IN MONUMENT WELL. CITY ID B1687

FOUND AND SET POINTS AS SHOWN ON PAGE 2.

THIS POINT WAS REFERENCED PRIOR TO A CONSTRUCTION PROJECT IN THE VICINITY.

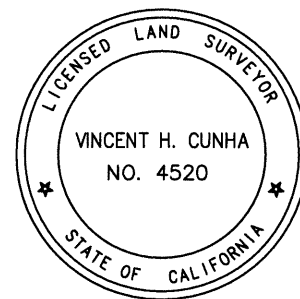
THE TIES SHOWN HEREON ARE FOR THE PURPOSE OF PERPETUATING FOUND MONUMENTATION.  
NO CLAIM IS MADE AS TO THE RELATIONSHIP OF THE POINTS OR LINES SHOWN HEREON TO TRUE  
BOUNDARY LOCATION.

## SURVEYOR'S STATEMENT

This Corner Record was prepared by me or under my direction in conformance with

the Professional Land Surveyors' Act on MAY 19, 2017.Signed Vincent H. Cunha P.L.S. No. LS 4520

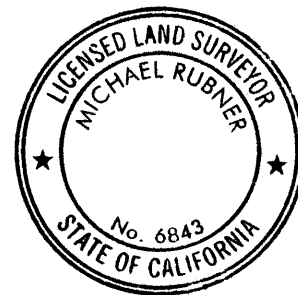
VINCENT H. CUNHA



## COUNTY SURVEYOR'S STATEMENT

This Corner Record was received 1 JUNE, 2017and examined and filed 11 AUGUST, 2017.Signed Michael Rubner P.L.S. or R.C.E. No. 6843Title COUNTY SURVEYOR

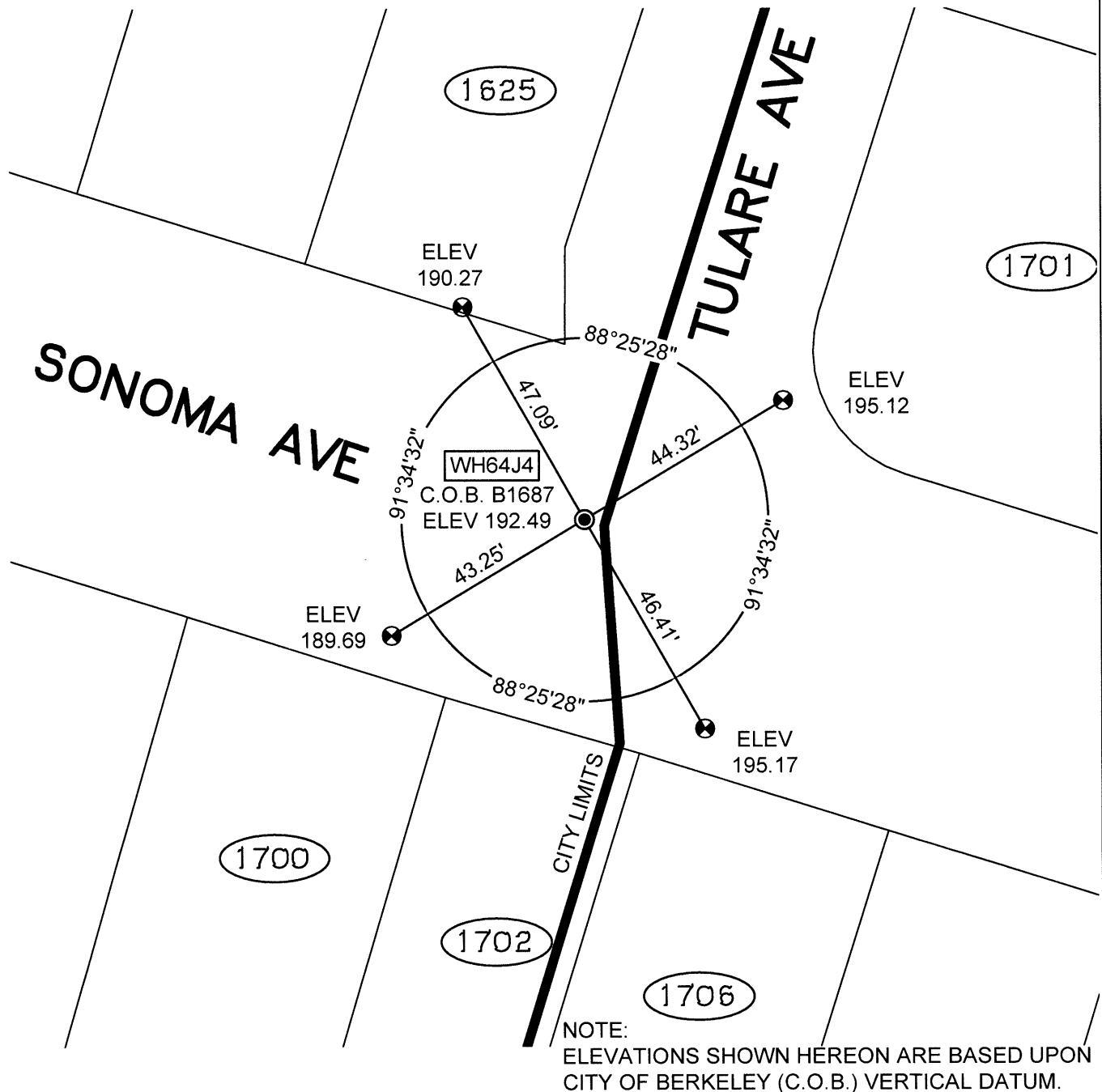
County Surveyor's Comment



SCALE: 1"=30'

## LEGEND

- FOUND IRON PIN IN CONCRETE IN MONUMENT WELL
- ⊗ SET CUT CROSS IN WALK
- ✕ SET CUT CROSS IN CURB
- ⊗ SET MAG AND SHINER
- SET REBAR & CAP STAMPED "CEI RP"
- AA##A# ALAMEDA COUNTY MONUMENT ID
- 19592 REFERENCE STREET ADDRESS



216010-M-SONOMA-CR1