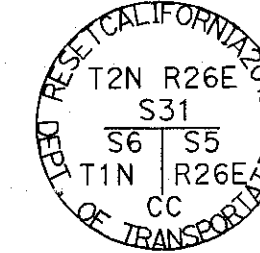


# RECORD OF SURVEY NO. 34-103

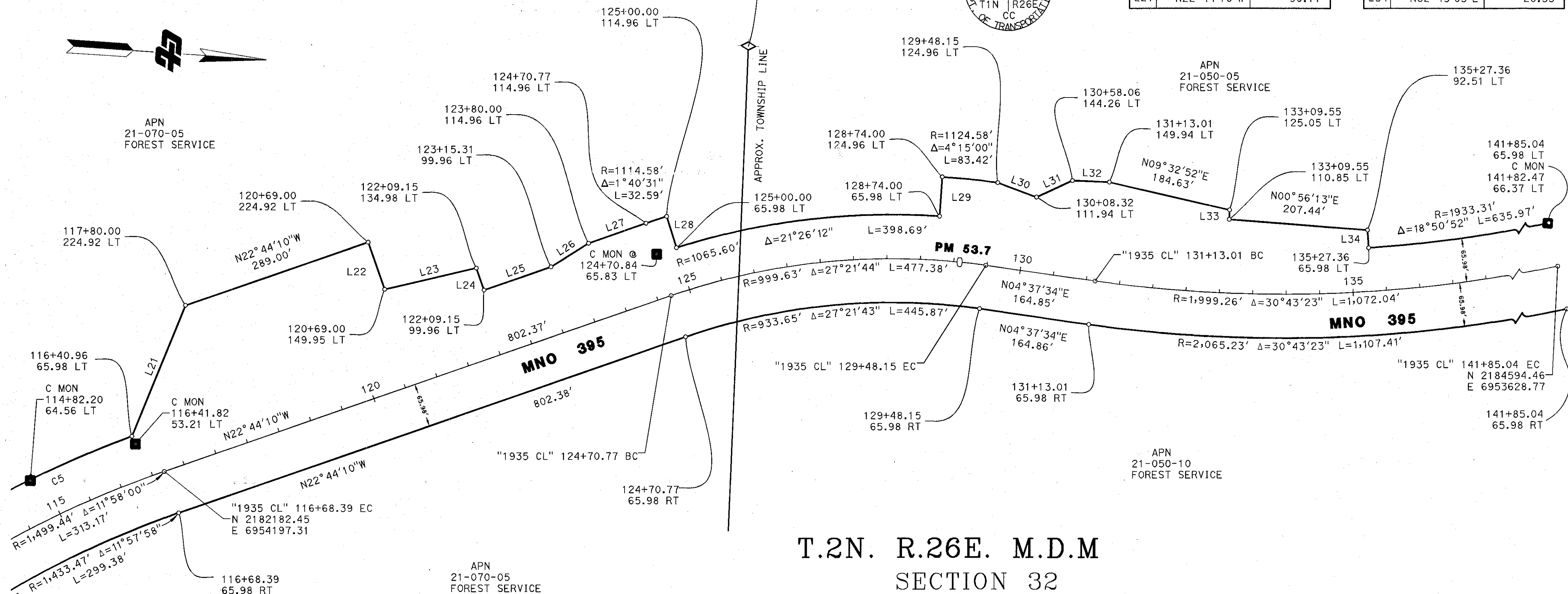
OF THE RIGHT OF WAY OF INTERSTATE ROUTE 09-MON-395 THROUGH PORTIONS OF SECTION 5, TOWNSHIP 1 NORTH, RANGE 26 EAST, M.D.B.&M. AND SECTION 32, TOWNSHIP 2 NORTH, RANGE 26 EAST, M.D.B.&M. IN THE UNINCORPORATED TERRITORY OF THE COUNTY OF MONO, STATE OF CALIFORNIA.

CLOSING CORNER  
FOUND ROCK MOUND AND BEARING TREES.  
SET "CADT" ALUMINUM CAP ON 2 1/2 IN ALUMINUM PIPE, FLUSH WITH GROUND, IN ROCK RING, STAMPED AS SHOWN, WITH 2X2X18 HUB WITH CT TAG BESIDE ALUMINUM PIPE  
N 2183009.95  
E 6953295.79



LINE DATA TABLE		
NO.	BEARING	DISTANCE
L21	N71°21'30"W	212.17'
L22	N67°15'50"E	74.97'
L23	N16°38'21"W	140.95'
L24	N67°15'50"E	35.02'
L25	N22°44'10"W	106.16'
L26	N35°47'27"W	66.41'
L27	N22°44'10"W	90.77'

LINE DATA TABLE		
NO.	BEARING	DISTANCE
L28	N68°56'22"E	48.98'
L29	N89°37'27"W	58.98'
L30	N16°50'09"E	61.56'
L31	N28°23'20"W	59.32'
L32	N01°16'32"W	55.24'
L33	N88°59'36"E	14.20'
L34	N82°45'05"E	26.53'



T.2N. R.26E. M.D.M  
SECTION 32

T.1N. R.26E. M.D.M  
SECTION 5

## LEGEND

- CONCRETE 'C' MONUMENT
- ◆ FOUND SECTION MONUMENT AS NOTED
- ◎ FOUND MONUMENT AS NOTED
- CALCULATED POSITION, NOTHING FOUND OR SET

STATE OF CALIFORNIA CALIFORNIA STATE TRANSPORTATION AGENCY DEPARTMENT OF TRANSPORTATION					
RECORD OF SURVEY					
FULL SIZE MAP SCALE: 1" = 100'					
FEET 0 50 100 200 300					
DISTRICT	COUNTY	ROUTE	SHEET PM	SHEET NO.	TOTAL SHEETS
09	MONO	395	53.7	5	5