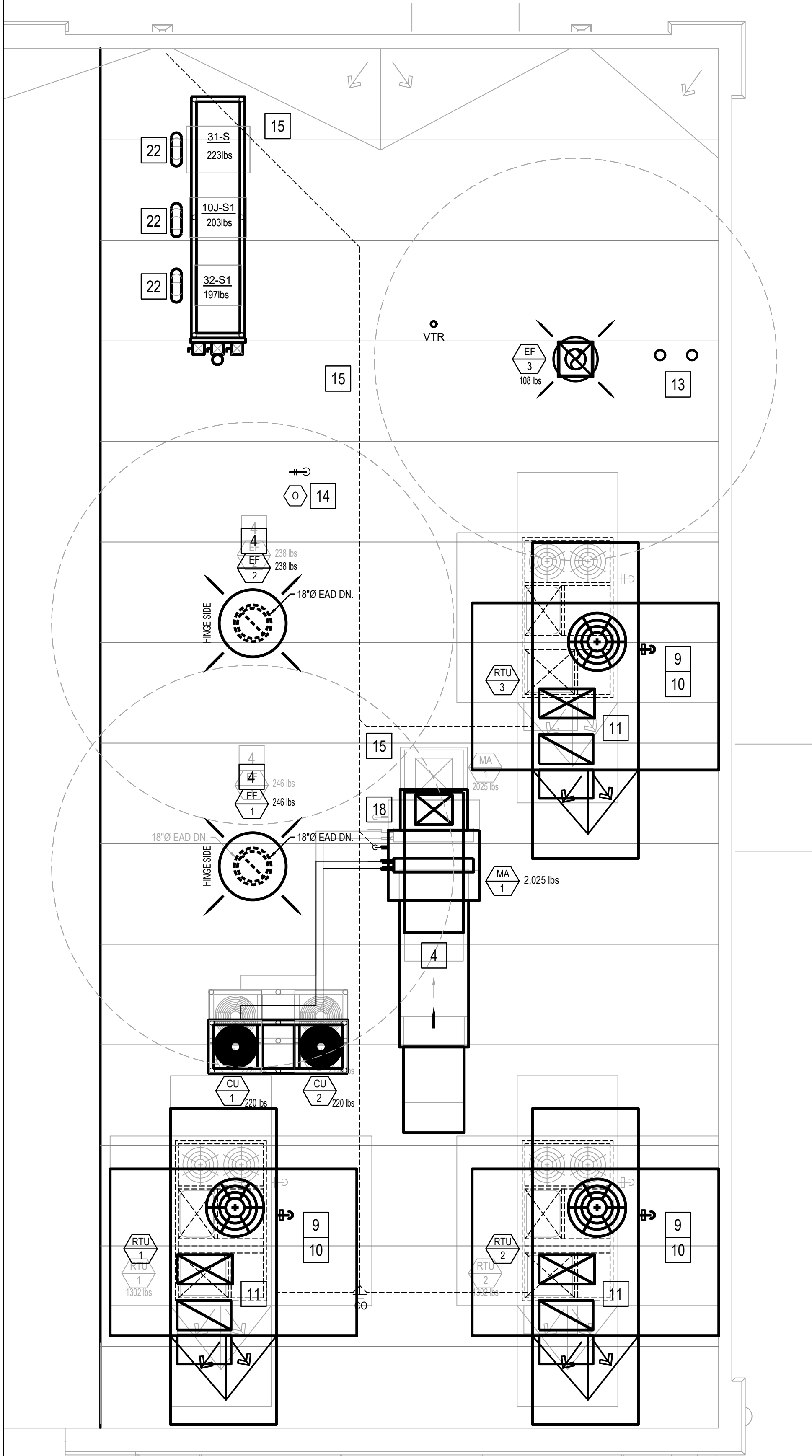


HVAC FLOOR PLAN 2

Scale: 1/4"=1'-0" M-100



HVAC ROOF PLAN 1

Scale: 1/4"=1'-0" M-100

MECHANICAL KEY NOTES:

1. INSTALL GREASE EXHAUST HOODS FURNISHED BY PANDA. HOOD SHALL BE ONE CAPTIVEAIRE 4824-ND HOOD EXHAUSTING 3,450 CFM. SUPPORT FROM STRUCTURE ABOVE WITH UNISTRUT AND ALL THREADED ROD. MOUNT HOOD PER LOCAL CODE REQUIREMENTS. REFER TO PLAN FOR HOOD CONNECTIONS. SEE CODE COMPLIANCE DRAWINGS ON SHEET M-500 AND CAPTIVEAIRE HOOD DRAWINGS FOR ADDITIONAL REQUIREMENTS. (TWO SECTIONS TOTAL).
2. INSTALL MANUFACTURED CAPTIVEAIRE 18" GREASE EXHAUST DUCT. ROUTE ON TOP OF MAKE UP AIR DUCT, FROM INLET OF ROOF MOUNTED GREASE EXHAUST FAN, CONNECT TO EXHAUST HOOD COLLAR, FIELD VERIFY. SEAL DUCT TO THE ROOF CURB WITH FIRE CAULKING. SEE HOOD DETAIL DRAWINGS ON SHEET M-500 AND CAPTIVEAIRE DRAWINGS ON SHEETS M-400 TO M-411.
3. MOUNT THERMOSTAT AT MANAGER STATION. REFER TO DETAIL #1 ON SHEET E-200. SEE DWG FOR EXACT LOCATION OF REMOTE SENSOR. SEE ROOFTOP UNIT SCHEDULE AND TEMPERATURE CONTROL DIAGRAM DETAIL 5 ON SHEET M-501 FOR ADDITIONAL INFORMATION.
4. INSTALL GREASE EXHAUST FAN WITH CURB (EF-1 AND EF-2) AND MAKE UP AIR (MA-1) FURNISHED BY PANDA. COORDINATE LOCATION OF UNIT WITH ARCHITECTURAL AND STRUCTURAL DRAWINGS.
5. PROVIDE AND INSTALL A REMOTE SENSOR FOR ROOFTOP UNIT AT THIS LOCATION. MOUNT REMOTE SENSOR IN RETURN AIR DUCTWORK. SEE TEMPERATURE CONTROL DIAGRAM ON SHEET M-501 FOR ADDITIONAL INFORMATION.
6. PROVIDE AND INSTALL DUCT MOUNTED SMOKE DETECTOR AT MAIN SUPPLY AIR DUCT PER 2020 FBC MECHANICAL SECTION 606.2.1. DETECTORS SHALL BE INTERLOCKED TO SHUT DOWN ROOFTOP UNITS UPON DETECTION OF SMOKE. PROVIDE ALL CONTROL WIRING NECESSARY TO PERFORM THIS OPERATION.
7. PROVIDE FLEXIBLE CONNECTION BETWEEN UNIT, ROUTE DUCT THRU ROOF CURB AND TRUSS.
8. NOT USED.
9. NOT USED.
10. FURNISH AND INSTALL ALL TEMPERATURE CONTROL WIRING FROM THE UNIT TO THE THERMOSTAT OR OTHER CONTROL DEVICES.
11. FULL SIZE SA AND RA UP TO RTU. TRANSITION AS REQUIRED TO RTU INLET/OUTLET SIZE.
12. PVC COMBINATION VENT AND COMBUSTION AIR PIPING PROVIDED AND INSTALLED BY PLUMBING FOR SEALED COMBUSTION WATER HEATER. REFER TO PLUMBING PLANS.
13. WATER HEATER CONCENTRIC VENT TERMINATION. REFER TO PLUMBING PLANS. OFFSET AS REQUIRED FOR CLEARANCE FROM AIR INTAKES.
14. ROOF HYDRANT. REFER TO PLUMBING DRAWINGS.
15. REROUTE EXISTING CONDENSATE LINE TO FACILITATE INSTALLATION OF NEW ROOF TOP EQUIPMENT.
16. MA DUCT (BELOW MAKE UP AIR) CONNECT TO 28"x10" RISER FROM SUPPLY PLENUM.
17. PROVIDE DUCT EXTERNAL INSULATION WRAP AT TRUNK, TYPICAL.
18. CONNECT MA-1 CONDENSATE TO EXISTING CONDENSATE LINE.
19. NOT USED.
20. GREASE DUCT CLEANOUT LOCATION. PROVIDE ACCESS TO CLEANOUT ABOVE CEILING. REFER TO MECHANICAL SPECIFICATIONS SHEET M-000
21. 8" CONNECTION TO HOOD RTU SUPPLY PLENUM COLLAR. BALANCE TO 236 CFM.
22. PROVIDE AND INSTALL ACR TUBING, SIZED AND ROUTED PER MANUFACTURER'S INSTRUCTIONS. FROM REMOTE REFRIGERANT CONDENSERS TO WALK-IN COOLER AND FREEZER FAN COILS AND ICE MAKER. TEST, PURGE, EVACUATE AND CHARGE LINES AS REQUIRED BY MANUFACTURER. (START-UP FOR ICE MAKER IS BY OWNER'S REPRESENTATIVE). ROUTE REFRIGERANT LINES THROUGH "ATR HUB" PROVIDED AND INSTALLED BY GC (REFER TO ARCH. ISO 3 AND 4, SHEET A-108). UNITS SECURED TO RACK BY G.C.
23. ROOM AIR SENSOR FROM CAPTIVEAIRE HOOD ON BACK OF MENU BOARD WALL, AS CLOSE TO CEILING AS POSSIBLE.
24. TRANSITION FULL SIZE RETURN PLENUM DOWN TO GRILLES AS REQUIRED. INSIDE RETURN AIR PLENUM WITH 1" LINER PAINTED FLAT BLACK. RE: 1/M-501

NOTE: MAXIMUM FLEXIBLE DUCT LENGTH ALLOWED SHALL BE PER LOCAL CODE AND AMENDMENTS. IMC HAS NO LIMITATIONS FOR FLEXIBLE DUCT LENGTHS.



PANDA EXPRESS, INC.
1683 Walnut Grove Ave.
Rosemead, California
91770
Telephone: 626.799.9898
Facsimile: 626.372.8288

All ideas, designs, arrangement and plans indicated or represented by this drawing are the property of Panda Express Inc. and were created for use on this specific project. None of these ideas, designs, arrangements or plans may be used by or disclosed to any person, firm, or corporation without the written permission of Panda Express Inc.

REVISIONS:

ISSUE DATE:

1	BID SET	2023-05-02
---	---------	------------

DRAWN BY:

PANDA PROJECT #: S4-24-D22020

ARCH PROJECT #: P7377

www.cphcorp.com
A Full Service
A & E Firm

Plans Prepared By
CPL, LLC
500 West Fulton St.
Sanford, FL 32771
Ph: 407.322.6841
Licenses:
Eng. C.O.A. No. 3215
Survey L.B. No. 7143
Arch. Lic. No. AA2600926
Lndscp. Lic. No. LC0000298

PANDA EXPRESS

PANDA END CAP
3301 W HILLSBORO BLVD
DEERFIELD BEACH, FL 33442

M-100

H.V.A.C. FLOOR PLAN &
H.V.A.C. ROOF PLAN