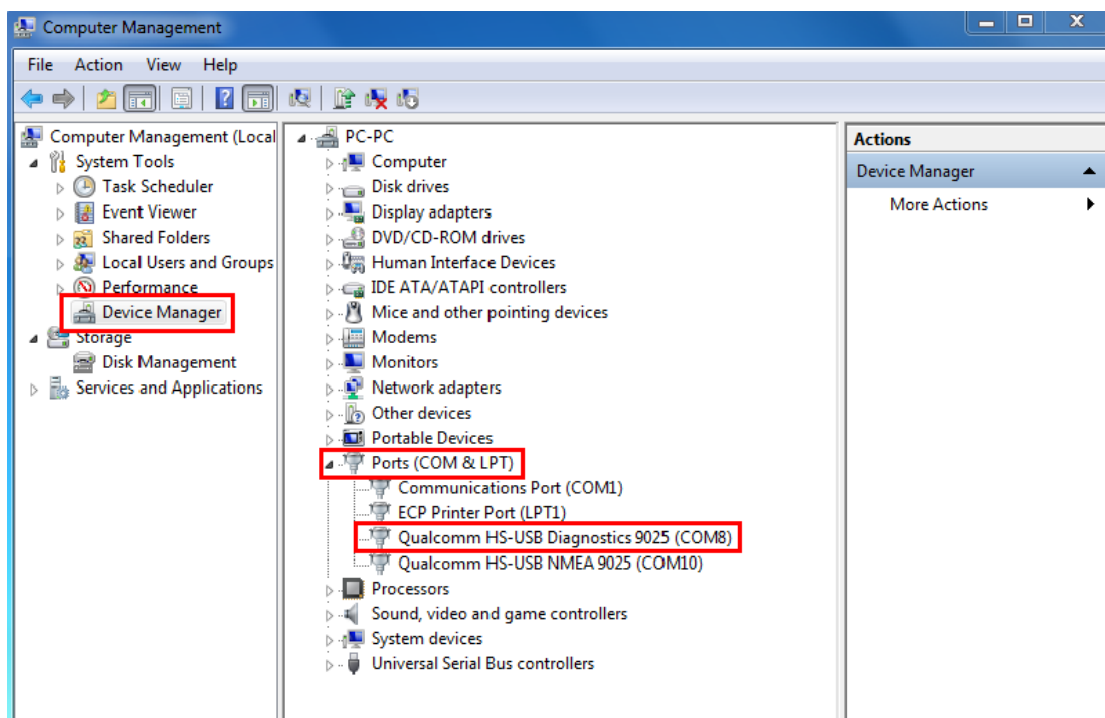


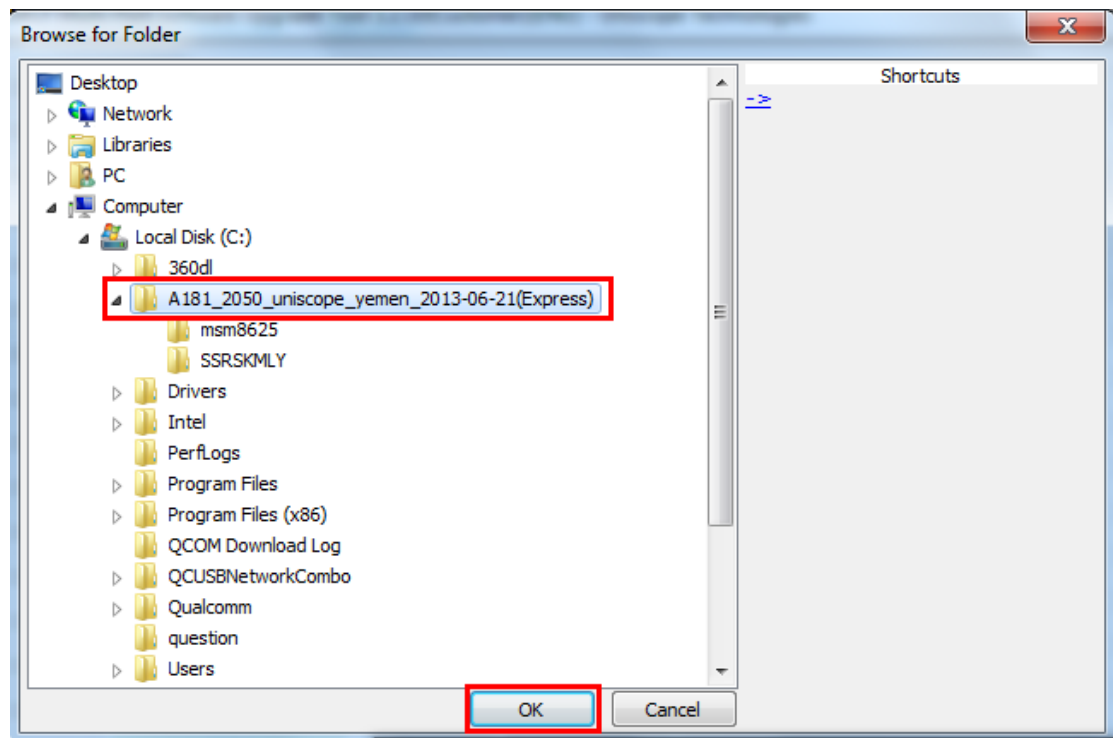
QCOM software upgrade guide v1.1

1. Remove SIM card & TF card, also please backup files in handset.
2. USB driver installation, please see "[USB driver installation guide.pdf](#)".
3. Power on handset firstly, and then connect handset with PC, there will show COM port of "[Diagnostics 9025](#)"(or "[DIAG 9025](#)").

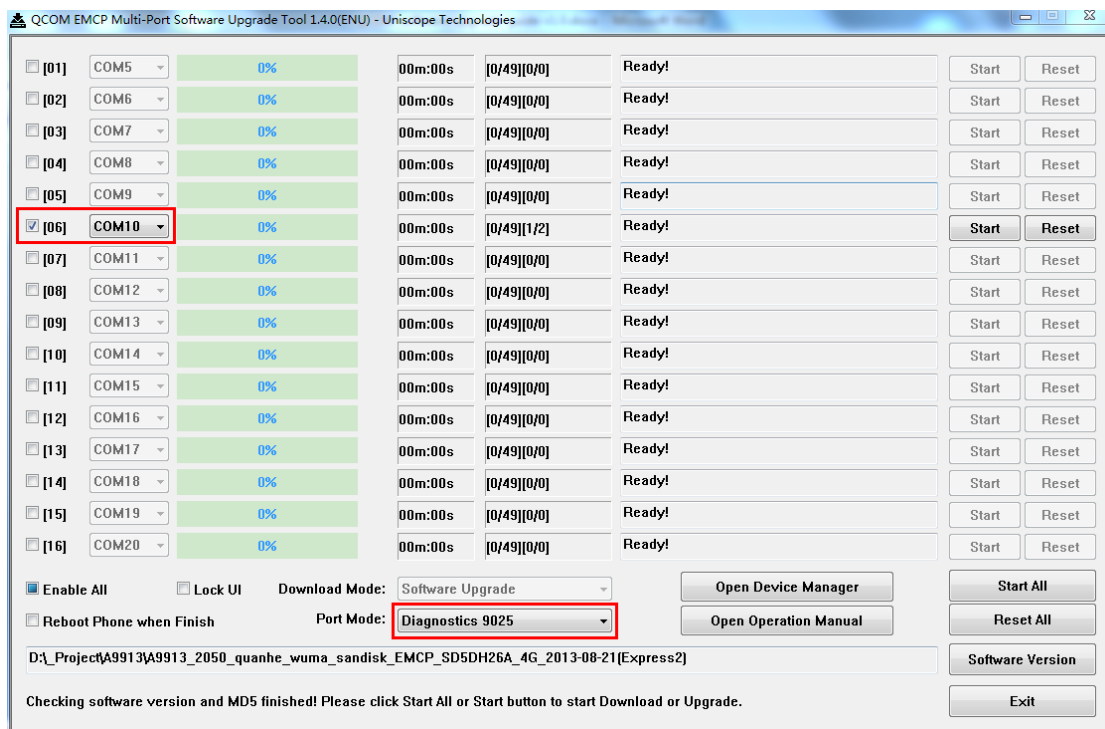
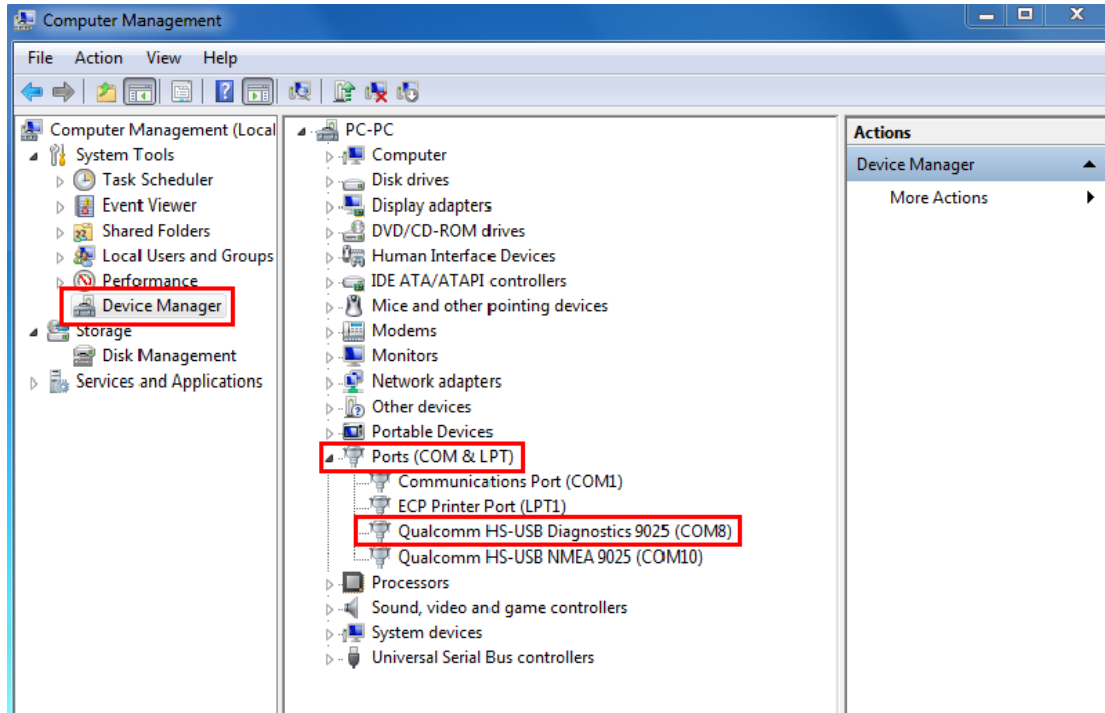


Start software download guide:

1. Click "[QCOM_MultiDnload_ENU.exe](#)" to open SW download tool.
2. Port Mode: select the COM port which shows in device manager.
3. Software Version: press [Software Version](#) button, select the SW version you want to upgrade, and then click [OK](#) button.

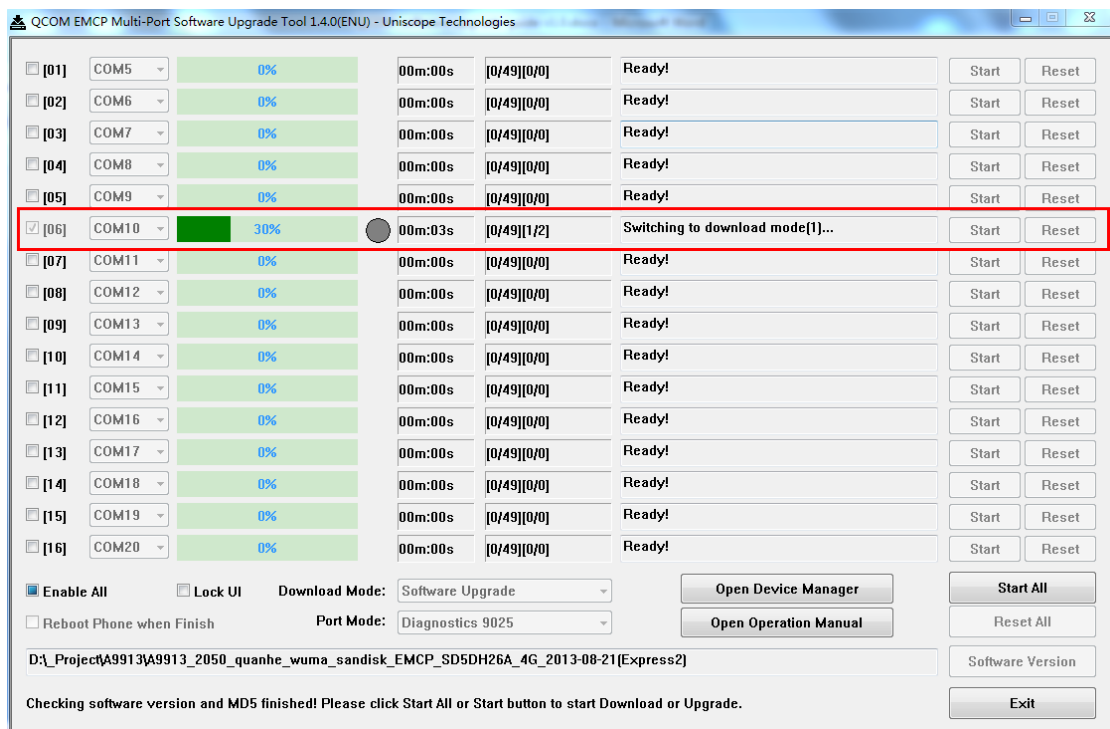


4. When you click “OK” button, it will check MD5 value automatically, when finish checking, it will prompt you to click “Start All” or “Start” button to upgrade SW version.
5. “Open Device Manager”>> COM & LPT, to get the COM port number on your PC, and select the concordant one on the home interface of the tool.

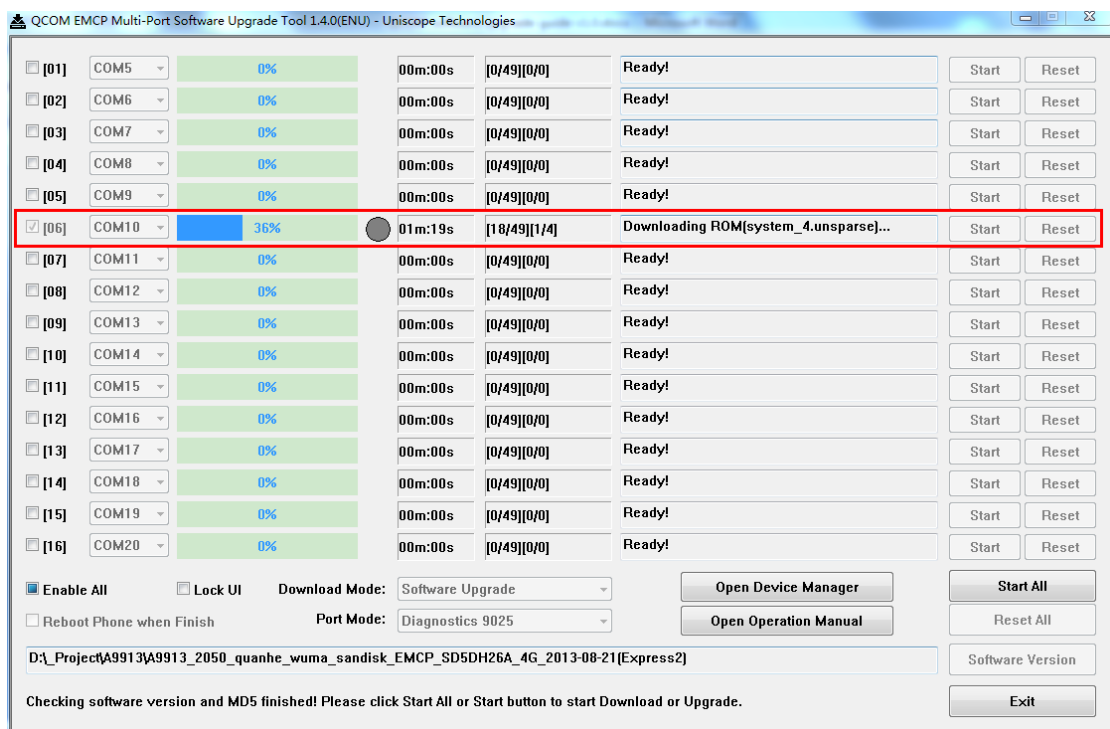


6. After select **Software Version**, **Port Mode** and **COM** port number then press “**Start All**” or “**Start**” button to download software.

7. Upgrade tool will connect handset firstly, then switch to download mode.



8. And download ROM of handset.



9. Finish upgrading software.

QCOM EMCP Multi-Port Software Upgrade Tool 1.4.0(ENU) - Uniscope Technologies

<input type="checkbox"/> [01]	COM5	0%	00m:00s	[0/49][0/0]	Ready!	Start	Reset
<input type="checkbox"/> [02]	COM6	0%	00m:00s	[0/49][0/0]	Ready!	Start	Reset
<input type="checkbox"/> [03]	COM7	0%	00m:00s	[0/49][0/0]	Ready!	Start	Reset
<input type="checkbox"/> [04]	COM8	0%	00m:00s	[0/49][0/0]	Ready!	Start	Reset
<input type="checkbox"/> [05]	COM9	0%	00m:00s	[0/49][0/0]	Ready!	Start	Reset
<input checked="" type="checkbox"/> [06]	COM10	100%	02m:43s	[49/49][2/5]	Upgrade finished!	Start	Reset
<input type="checkbox"/> [07]	COM11	0%	00m:00s	[0/49][0/0]	Ready!	Start	Reset
<input type="checkbox"/> [08]	COM12	0%	00m:00s	[0/49][0/0]	Ready!	Start	Reset
<input type="checkbox"/> [09]	COM13	0%	00m:00s	[0/49][0/0]	Ready!	Start	Reset
<input type="checkbox"/> [10]	COM14	0%	00m:00s	[0/49][0/0]	Ready!	Start	Reset
<input type="checkbox"/> [11]	COM15	0%	00m:00s	[0/49][0/0]	Ready!	Start	Reset
<input type="checkbox"/> [12]	COM16	0%	00m:00s	[0/49][0/0]	Ready!	Start	Reset
<input type="checkbox"/> [13]	COM17	0%	00m:00s	[0/49][0/0]	Ready!	Start	Reset
<input type="checkbox"/> [14]	COM18	0%	00m:00s	[0/49][0/0]	Ready!	Start	Reset
<input type="checkbox"/> [15]	COM19	0%	00m:00s	[0/49][0/0]	Ready!	Start	Reset
<input type="checkbox"/> [16]	COM20	0%	00m:00s	[0/49][0/0]	Ready!	Start	Reset

☒ Enable All☐ Lock UI

Download Mode: Software Upgrade

☐ Reboot Phone when Finish

Port Mode: Diagnostics 9025

Open Device Manager

Open Operation Manual

Start All

Reset All

Software Version

Exit

D:_Project\A9913\A9913_2050_quanhe_wuma_sandisk_EMCP_SD5DH26A_4G_2013-08-21[Express2]

Checking software version and MD5 finished! Please click Start All or Start button to start Download or Upgrade.