

Swamp & Overflowed Lands  
 Stanislaus County Surveys Nos 31832  
 Township 3 South Range 12 East  
 Base and Meridian of Mount Diablo.  
 Sec 34 continuation of fractions 384, 63.40 acres  
 Sec 35 continuation of fraction 1, 14.81 acres

Surveyed for G D Dickinson  
 By Silas Wilcox County Surveyor  
 Field notes of the above Survey made on  
 the 21<sup>st</sup> day of December 1855

Beginning at a Stake at the NW corner  
 of Sec 34 thence running E 40. chs to  $\frac{1}{4}$  Sec post  
 on North boundary line of Sec 34 thence

S 17.14 chs to River thence Meandered down  
 stream first running S 10° 18' W 4.09 chs thence  
 S 67° 22' W 2.80 chs thence S 54° 44' W 5.91 chs thence S 61° 18' W  
 10.15 chs thence S 18° 48' W 4.39 chs thence S 60° 48' W 6. chs

thence S 89° 18' W 3. chs thence N 11° 24' W 4.18 chs thence N 53° 47' W 3.15 chs  
 thence N 13° 45' W 4.17 chs thence N 11° 23' E 8.39 chs thence N 6° 18'  
 E 5.03 chs thence N 44° 51' E 00.83 links thence N 3° 24' W 2.50 chs  
 thence N 9° 42' W 2.85 chs thence N 13° 33' W 1.81 chs and thence  
 N 67° 12' W 10.44 chs to a stake the place of Beginning

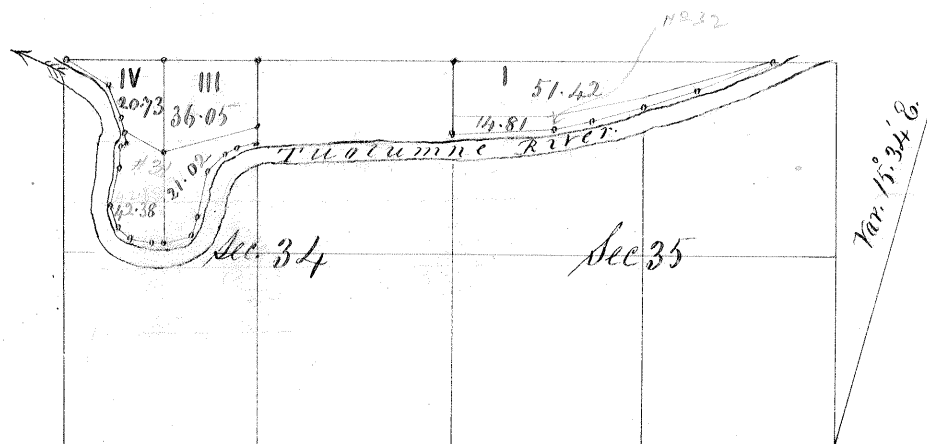
Beginning again at a Stake at the North W corner  
 of Sec 35 thence running E 66.93 chs to River thence Meandered  
 down stream first S 69° 30' W 17.50 chs thence S 72° 54' W 10.90 chs  
 thence S 72° 11' W 11.88 chs thence S 82° 12' W 4.89 chs thence S 87° 42'  
 W 1.19 chs and thence N 4.50 chs to the place of beginning

The continuation of fractions 384 in Section 34 containing  
 63.40 acres Also the continuation of fraction 1 in  
 Section 35 containing 14.81 acres of Land Township 3  
 South Range 12 East

Surveyed by the true Meridian with a  
 Magnetic variation of 15° 34' East according  
 to the U S Survey

December 26<sup>th</sup> 1855

G. D. Dickenson  
 Plat of Surveys Nos 31 + 32  
 Township 3 South - Range 12 East  
 Secs 34 + 35



Scale 2 inches to the mile

I hereby certify that the foregoing Survey was  
 Made in accordance with the Act of the  
 Legislature and with the instructions of the  
 Surveyor General of the State of California

Dated January 25<sup>th</sup> 1856

Silas Wilcox  
 County Surveyor

Survey No 8 Page 31

Survey No 9 Page 33

River in fall

14.38  
 21.07  
 63.40

Swamp and Overflowed Lands  
 Stanislaus County Survey No. 31, 32.  
 Township 3. South Range 12 East  
 Base and Meridian of Mount Diablo  
 Continuation of Fraction 3.4 in Sec. 34.  
 Sec. 35 continuation of fraction 1. 14.81. Acres  
 Area 58.21 Acres

Surveyed for G. D. Dickenson

By Silas Wilcox County Surveyor.

Field notes of Survey No. 31. made on the 20 day of December 1855.  
 Beginning at a Stake at the N. W. Cor. of Sec. 34. thence  
 Running E 40° 00' By the N. S. Meandering line first S 32° 1/2'  
 E 10.50 chs thence S 13° 1/2' E 5 chs thence S 33° E 7 chs thence S 64° E 7 chs thence  
 N 78° 1/4' E 20.60 chs thence South 4 chs to the right Banks of the  
 Toulumne River. thence meandering down stream first  
 running S 70° 18' W 4.09 chs thence S 69° 22' W 2.20 chs thence S 54° 24' W 2.91 chs  
 thence S 6° 18' W 0.15 chs thence S 18° 28' W 4.39 chs thence S 8° 48' W 6 chs thence  
 S 89° 18' W 3 chs thence N 42° 1/4' W 4.13 chs thence N 55° 47' W 3.08 chs thence N 13°  
 45' W 4.27 chs thence N 42° 3' E 8.39 chs thence N 6° 18' E 5.03 chs thence N 44° 51' E 8.31 chs  
 thence N 3° 24' W 2.50 chs thence N 9° 42' W 2.25 chs thence N 13° 33' W 7.21 chs  
 thence N 67° 12' W 0.46 chs to a Stake the place of Beginning  
 Containing 43.40 Acres

Field notes of Survey No. 32. made on the 20 day of December 1855.  
 Beginning at Meandering post on line between  
 Sec. 34, 35. N 53° 1/4' E 4.90 chs thence N 87° 44' E 13 chs thence N 78° 1/4' E 10 chs  
 thence N 78° 1/2' E 6 chs thence N 58° 1/2' E 10 chs to Meandering post on line  
 between Sec 26 & 35 thence S 89° 32' E 3 chs to the right Banks of the  
 Toulumne River thence Meandering down stream first  
 running S 69° 30' W 7.50 chs thence S 72° 54' W 10.90 chs thence S 72° 11' W 8.88  
 thence S 82° 12' W 7.89 chs thence S 87° 42' W 20.89 chs and thence N 62° 1/4'  
 E 4.50 chs to the place of Beginning Containing 14.81. Acres  
 Surveyed by the true meridian with a magnetic  
 variation of 15.34 East according to the U. S. Survey

Area 58.21. Acres

I hereby certify that the foregoing field notes to  
 be a Corrected Copy of Survey No. 31, 32 made under  
 the instructions from the Surveyor General  
 of this State this 17 December 1856

Silas Wilcox  
 County Surveyor

no full