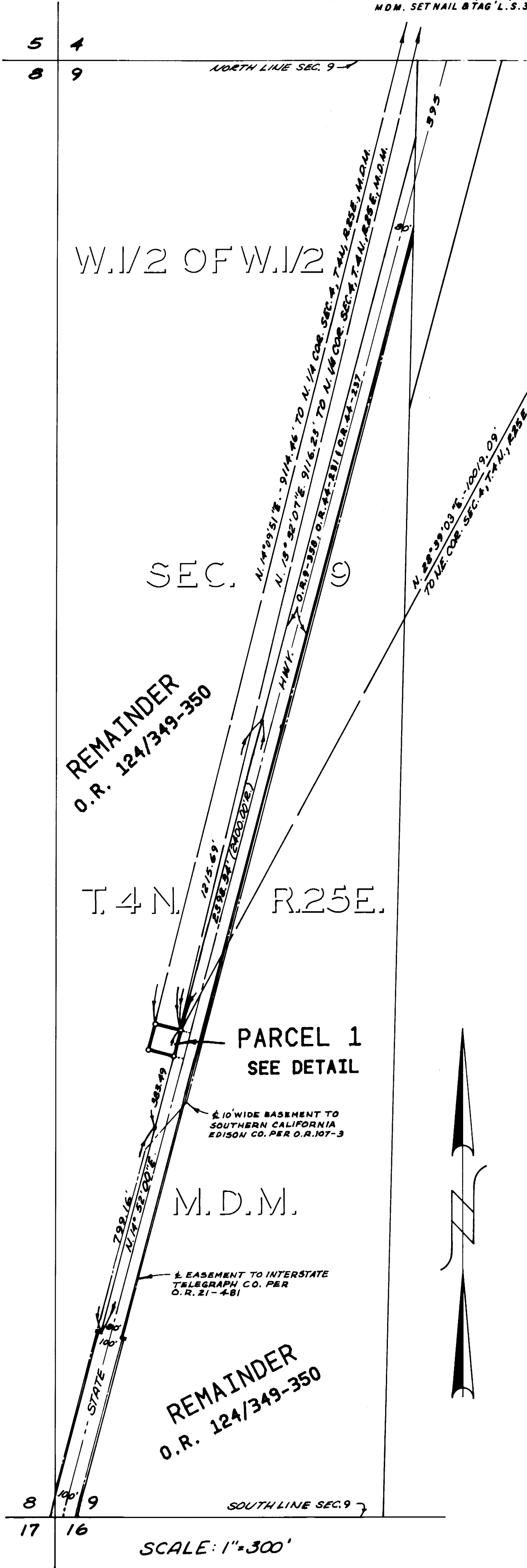


PARCEL MAP NO. 32-27

IN THE COUNTY OF MONO
STATE OF CALIFORNIA

BEING A DIVISION OF A PORTION OF THE W.1/2 OF THE
W.1/2 OF SECTION 9 T.4 N., R.25 E., M.D.M.

FD. 6"x6" FENCE POST, UP 5.9' PER
R.S.B. 1/17 (R.S. 32/3), ACCEPTED
AS N 1/4 COR. SEC. 4, T.4 N., R.25 E.,
M.D.M. SET NAIL & TAG 'L.S. 3670'



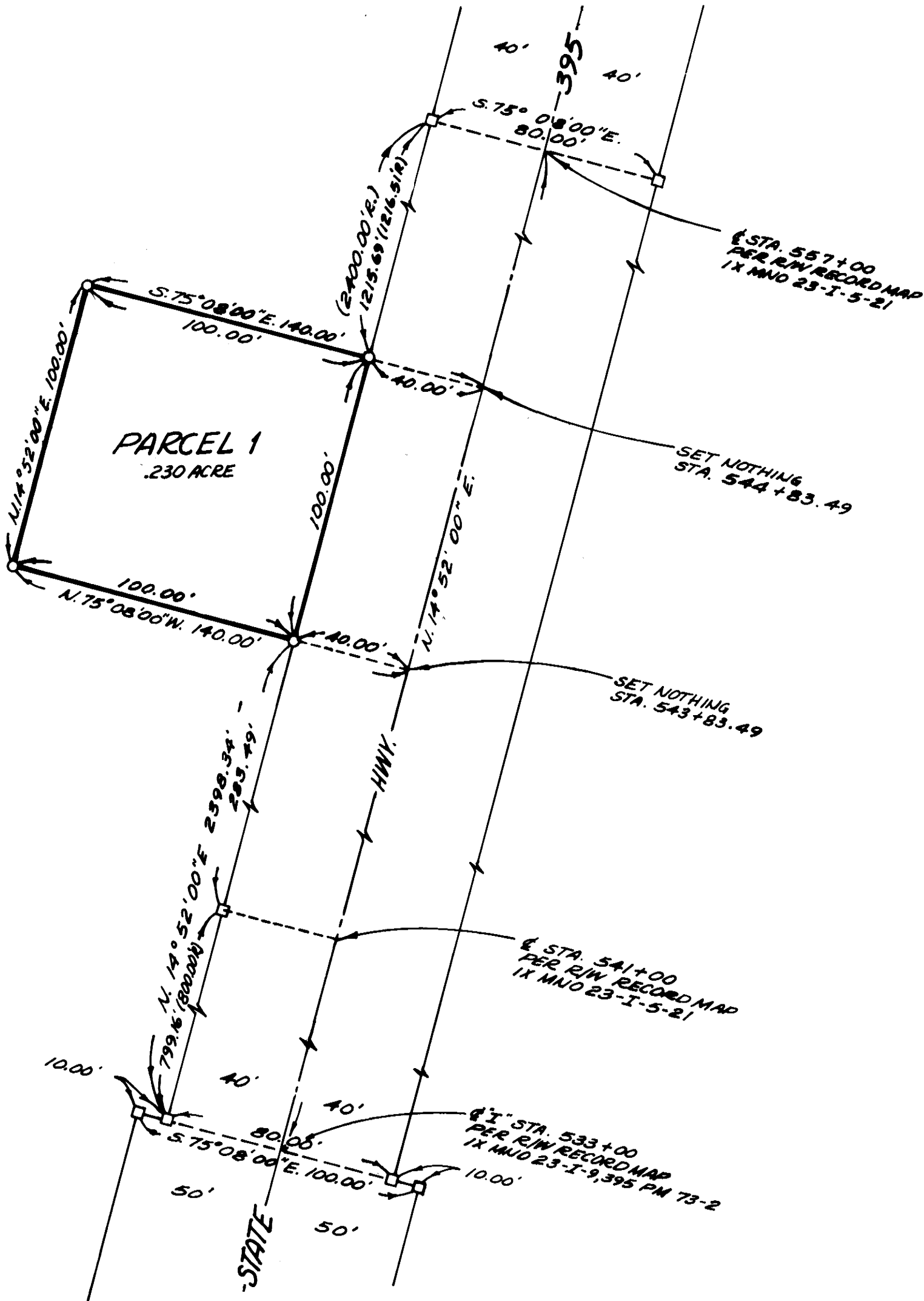
MONUMENTATION NOTES

- INDICATES SET 1" I.P. WITH BRASS TACK AND TAG 'L.S. 3670' IN LEAD FILLING, FLUSH.
- INDICATES FOUND 6"x6" CONCRETE HIGHWAY R/W MONUMENT WITH PIN IN TOP UP, 0.5' UNLESS OTHERWISE NOTED.
- R INDICATES RECORD PER CALIFORNIA DEPARTMENT OF TRANSPORTATION R/W RECORD MAP, DISTRICT IX, MONO COUNTY, ROUTE 23, SECTION I, SHEET 5 OF 21 SHEETS.

BASIS OF BEARINGS

N. 14° 52' E. FOR THE CENTERLINE OF STATE HIGHWAY 395 PER CALIFORNIA DEPARTMENT OF TRANSPORTATION R/W RECORD MAP, DISTRICT IX, MONO COUNTY, ROUTE 23, SECTION I, SHEET 5 OF 21 SHEETS, DATED APRIL 17, 1933.

FD. 2" I.P. WITH BRASS
CAP MARKED:
T.4 N. R.25 E.
33 34
4 3
T.4 N. R.25 E.
RECORDED
UP 0.2'
IN 3.0' X 3.0' X 4"
ROCK MOUND PER
R.S.B. 1/17 (R.S. 32/3)



DETAIL
SCALE: 1" = 40'

SCALE: 1" = 300'

File No. 2 Case 87-A