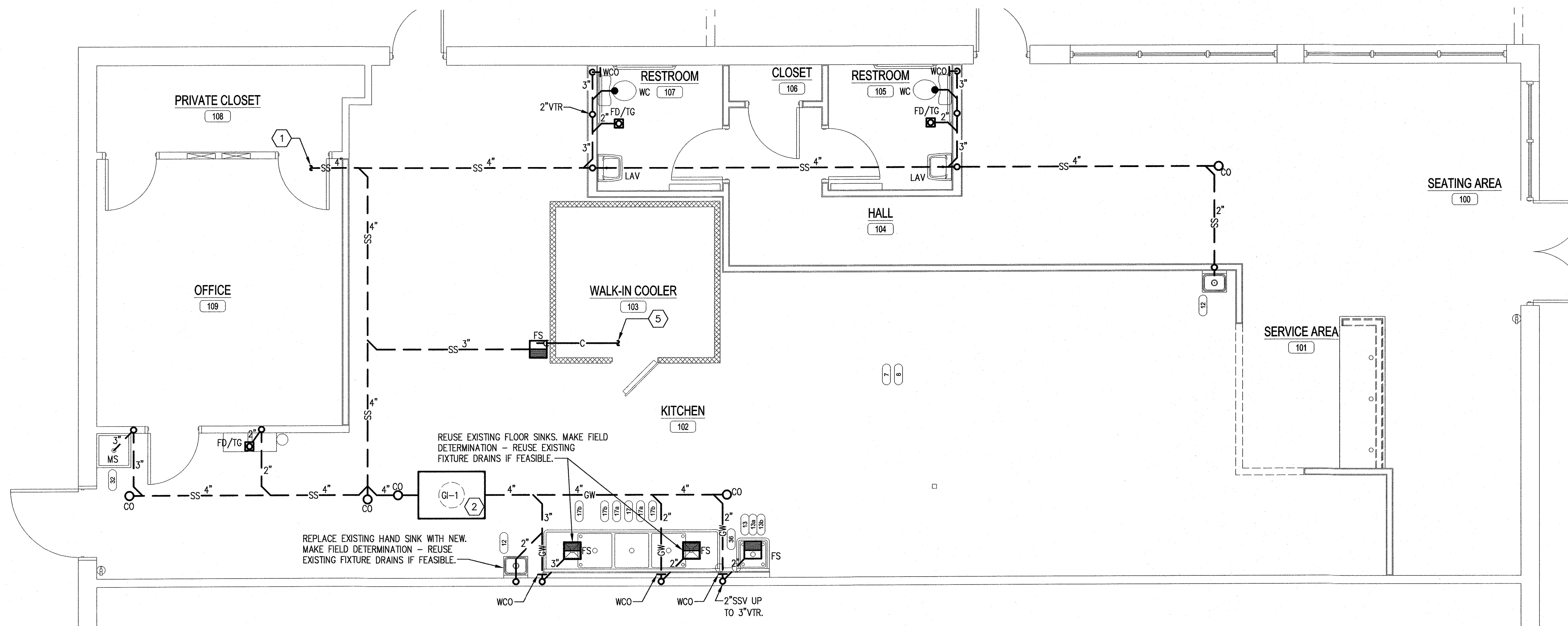


**1 PLUMBING SUPPLY PLAN**  
P1.1 SCALE: 1/4"=1'-0"



**2 PLUMBING WASTE PLAN**  
P1.1 SCALE: 1/4"=1'-0"

**RE-USE OF EXISTING FLOOR DRAINS/SINKS NOTE:**

PLUMBING CONTRACTOR IS RESPONSIBLE TO FIELD VERIFY AND REUSE EXISTING FLOOR DRAINS, FLOOR SINKS, & ASSOCIATED PIPING AS MUCH AS FEASIBLE. MAKE FIELD ADJUSTMENTS TO EXISTING PIPING AND DESIGNED ROUTING AS REQUIRED TO PROVIDE A COMPLETE INSTALLATION THAT COMPLIES WITH CODE & THE ORIGINAL DESIGN INTENT.

**KEY NOTES:**

- FIELD LOCATE & CONNECT NEW SS TO EXISTING SS IN THIS AREA. PLUMBING CONTRACTOR IS RESPONSIBLE TO FIELD VERIFY AND MAKE FIELD ADJUSTMENTS TO EXISTING PIPING AND DESIGNED ROUTING AS REQUIRED TO PROVIDE A COMPLETE INSTALLATION THAT COMPLIES WITH CODE & THE ORIGINAL DESIGN INTENT.
- GREASE INTERCEPTOR (GI-1) BELOW SLAB. INSTALL IN STRICT ACCORDANCE WITH MANUFACTURER'S INSTRUCTIONS. FLOW CONTROL NOT REQUIRED FOR THIS MODEL.
- FIELD LOCATE & CONNECT NEW 1" CW TO EXISTING CW ON SITE. CONFIRM METER SIZE SUITABLE FOR UP TO 19 GPM AND MINIMUM 1" CW SERVICE. REPLACE EXISTING METER AND SERVICE AS NEEDED.
- FIELD LOCATE & CONNECT NEW NG TO EXISTING NG PIPING ON ROOF. NEW GAS PIPING SHOWN IS BASED ON LESS THAN 2 P.S.I. DELIVERY PRESSURE WITH A 0.5" W.C. PRESSURE DROP AND 0.6 SPECIFIC GRAVITY GAS, BLACK STEEL PIPE, 150' EQUIVALENT LENGTH LONGEST RUN, AND 1199.8 CFH TOTAL CONNECTED GAS LOAD. FIELD CONFIRM EXISTING GAS PIPE SIZE TO BE MINIMUM 2.5" FOR DELIVERY PRESSURE STATED ABOVE OR MINIMUM 1.5" FOR DELIVERY PRESSURE OF 2 P.S.I. WITH 1.0 P.S.I. PRESSURE DROP.
- CONNECT TO EVAPORATOR CONDENSATE DRAIN CONNECTION. DISCHARGE TO FS WITH AIR GAP.
- WATER FILTER ON WALL. COORDINATE MOUNTING HEIGHT WITH OWNER PRIOR TO ROUGH-IN. CONNECT FILTERED WATER TO COLD WATER VALVE FOR KITCHEN FAUCET ITEM #13A.
- 1 1/2" EMERGENCY GAS SHUT-OFF VALVE. TRAIN. GAS TO BE INTERLOCKED WITH HOOD FIRE SUPPRESSION SYSTEM AND IS TO SHUT-OFF IF FIRE SUPPRESSION SYSTEM IS ACTIVATED.
- SHUT-OFF VALVE, BFP-1, & PRV IN VERTICAL.

**EXISTING CONDITIONS NOTE:**

ALL EXISTING PIPING LOCATIONS AND SIZES SHOWN ARE BASED ON INFORMATION RECEIVED AND MAY NOT REFLECT ACTUAL CONDITIONS. PLUMBING CONTRACTOR IS RESPONSIBLE TO FIELD VERIFY AND MAKE FIELD ADJUSTMENTS TO EXISTING PIPING AND DESIGNED ROUTING AS REQUIRED TO PROVIDE A COMPLETE INSTALLATION THAT COMPLIES WITH THE ORIGINAL DESIGN INTENT.

**KITCHEN EQUIPMENT DESIGNATION:**

REFERENCES KITCHEN EQUIPMENT ITEM NUMBER. REFER TO KITCHEN EQUIPMENT SCHEDULE ON SHEET A-6.0 FOR KITCHEN EQUIPMENT CONNECTION SCHEDULE & MANUFACTURER. REFERENCE KITCHEN EQUIPMENT CUT SHEETS FOR SPECIFIC EQUIPMENT REQUIREMENTS.

**PLUMBING LEGEND**

— CW —	COLD WATER
— CW —	COLD WATER BURIED
— HW —	140°F HOT WATER
— HWR —	HOT WATER RETURN
— SS —	SANITARY SEWER
— SS —	SANITARY SEWER BURIED OR BELOW FLOOR
— GW —	GREASE INTERCEPTOR WASTE
— — —	SANITARY SEWER VENT
— NG —	NATURAL GAS
— C —	CONDENSATE

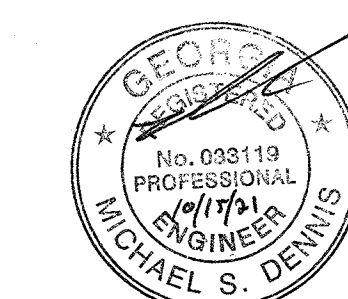


**GERALD P. NOE ARCHITECT**  
GEORGIA CERTIFICATE NO. 9106

399 LUCERNE DRIVE  
SPARTANBURG, SC 29302  
P: 864.583.2215 F: 864.583.2265  
mail@gpnarcht.com

CHECKED BY: MSD  
DRAWN BY: NSC

THIS DRAWING IS AN INSTRUMENT OF SERVICE AND SOLE PROPERTY OF THE ARCHITECT, AND SHALL NOT BE USED IN ANY WAY, WHATSOEVER, WITHOUT THE WRITTEN PERMISSION OF THE ARCHITECT. IT SHALL BE RETURNED TO THE ARCHITECT UPON DEMAND.  
COPYRIGHT 2021  
ALL RIGHTS RESERVED



10-13-2021

REVISIONS:

NO.	DATE	DESCRIPTION	BY
-----	------	-------------	----

FRANCHISEE NAME:

**PROSPERARE RESTAURANT GROUP, LLC**

ANDREW & SHIU KYI LEW  
6506 CREEKVIEW CIRCLE  
JOHNS CREEK, GEORGIA 30097

PROJECT NAME:

**8337**

**marco's PIZZA INTERIOR UP-FIT**  
CEDAR SHOALS SHOPPING CENTER  
10445 GAINES SCHOOL ROAD - UNIT B  
ATHENS, GEORGIA 30605

SHEET TITLE:

**PLUMBING PLANS**

PROJECT NUMBER 21-209

DATE 10-13-2021

SHEET NO.

**P1.1**

SHEET 1 OF 3

THE ARCHITECT SHALL NOT BE RESPONSIBLE FOR ACTUAL CONDITIONS, CONSTRUCTION AND/OR USE THEREOF. THIS DRAWING IS TO CONVEY DESIGN INTENTIONS AND/OR CODE COMPLIANCE ONLY. USE OF THESE DRAWINGS IMPLIES AGREEMENT WITH THESE CONDITIONS. THE CONTRACTOR IS TO VERIFY ALL DIMENSIONS.