

CORNER RECORD

Agency Index

BOOK 107 PAGE 39

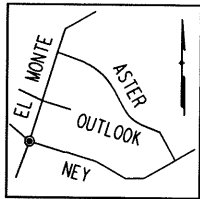
Document Number

CR 11079

City of OAKLANDCounty of ALAMEDA, California

Brief Legal Description

CITY OF OAKLAND MONUMENT AS SHOWN UPON MONUMENT MAP 1518B464_103 AND THE MAP OF EASTMONT (5-MAPS-37) NEAR THE INTERSECTION OF NEY AVENUE AND EL MONTE AVENUE.



CORNER TYPE

Government Corner ☐ Control
Meander ☐ Property
Rancho ☐ Other

Date of Survey 3/1/2018

COORDINATES (Optional)

N. 2104409.4 ± E. 6081739.3 ±☒ ElevationUnits Metric ☐ U.S. Survey Foot ☒☐ Horizontal Datum CCS 83Zone 3 Epoch Date

Vertical Datum

☐ Complies with Public Resources Code §§8801-8819☐ Complies with Public Resources Code §§8890-8902PLS Act Ref: ☐ 8765(d) ☒ 8771 ☐ 8773 ☐ Other:

Corner/
Monument: ☒ Left as found ☐ Established ☐ Rebuilt ☒ Pre-Construction
☐ Found and tagged ☐ Reestablished ☒ Referenced ☐ Post-Construction

Narrative of corner identified and monument as found, set, reset, replaced, or removed:

☒ See sheet #2 for description (s):

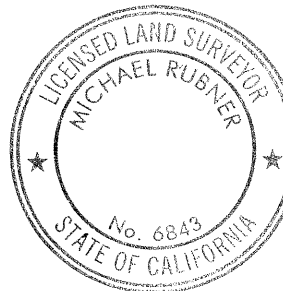
FOUND MONUMENT THAT COULD BE DAMAGED OR DESTROYED BY A PROPOSED GAS LINE CONSTRUCTION PROJECT. MONUMENT WAS REFERENCED AS SHOWN ON PAGE 2 OF 2.

THE PURPOSE OF THIS CORNER RECORD IS TO PRESERVE THE LOCATION OF THE MONUMENT PRIOR TO CONSTRUCTION. NO ATTEMPT WAS MADE TO DETERMINE THE RELATIONSHIP BETWEEN THE MONUMENT AND PROPERTY LINES, RIGHT-OF-WAY LINES, CENTERLINES OR OTHER MONUMENTS.

SURVEYOR'S STATEMENT

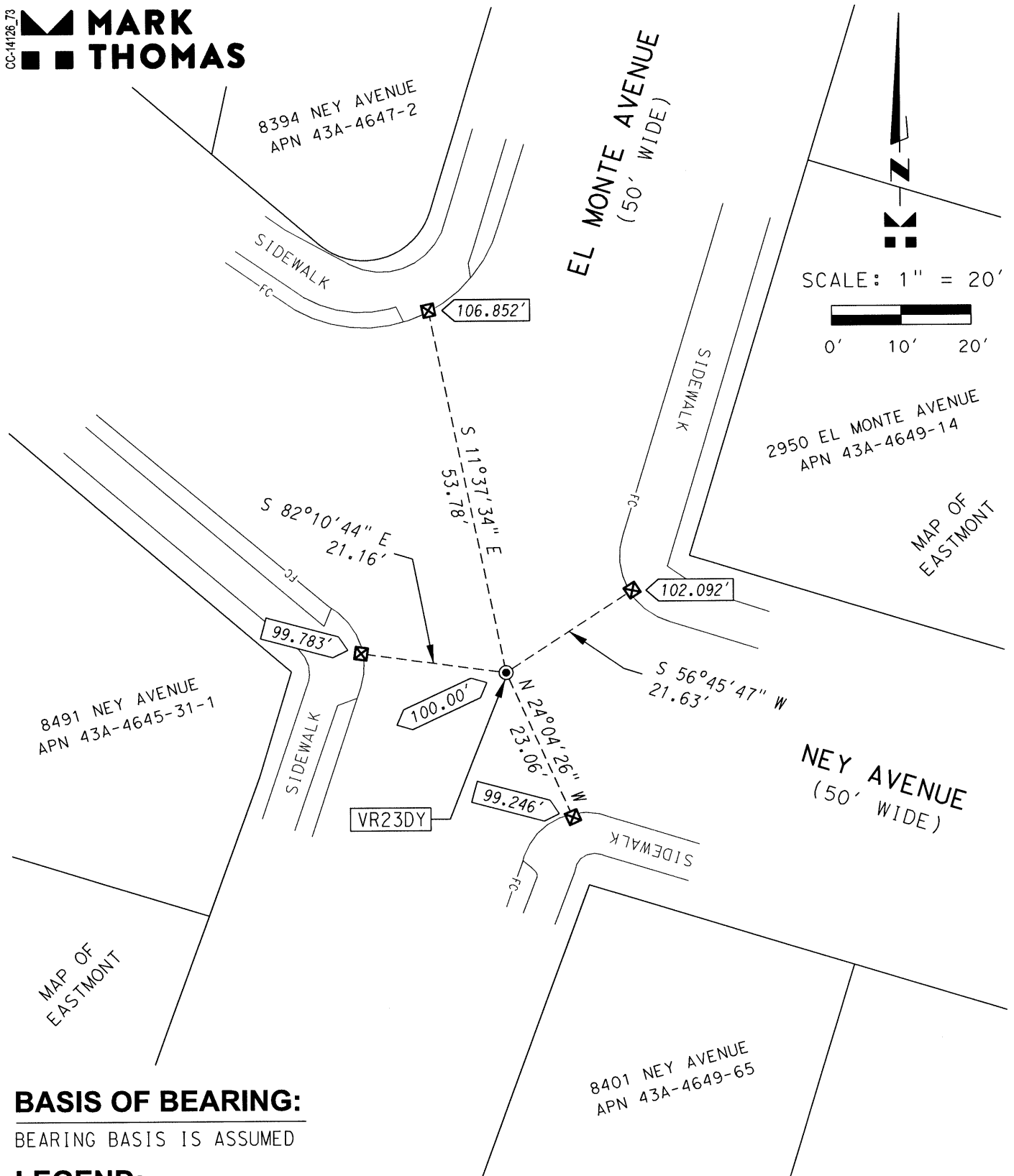
This Corner Record was prepared by me or under my direction in conformance with the Professional Land Surveyors' Act on APRIL 23, 2018Signed Erik Paul Kiel P.L.S. or ~~P.C.E.~~ No. 8911

COUNTY SURVEYOR'S STATEMENT

This Corner Record was received 6 MARCH 2018and examined and filed 27 APRIL 2018Signed Michael Rubner P.L.S. or ~~P.C.E.~~ No. 6843Title COUNTY SURVEYOR

County Surveyor's Comment

CC-14126_73

**MARK
THOMAS****BASIS OF BEARING:**

BEARING BASIS IS ASSUMED

LEGEND:

FOUND CONCRETE MONUMENT WITH 1/4" PIN IN WELL



SET CUT CROSS FOR REFERENCE POINT IN TOP OF CONCRETE CURB

185.012'

MONUMENT ELEVATION (ASSUMED)

XXX.XXX'

REFERENCE POINT ELEVATION (ESTABLISHED USING A DIGITAL LEVEL)

VR23DY

ALAMEDA COUNTY MONUMENT IDENTIFICATION NUMBER