

RECORD OF SURVEY
IN
SECTIONS 4, 9 & 10
T. 6 N. R. 12 E.
M.D.B. & M.

This map correctly represents surveys made by me or under my direction in conformance with the requirements of Chapter 15 of Division 3 of the Business and Professions Code at the request of Fred M. Dunow in October 1951, March 1953 and May 1956.

George W. Dyer
R.C.E. No. 7327

This map has been examined for conformance with the requirements of Chapter 15 of Division 3 of the Business and Profession Code this 21st day of December, 1959.

Ledger L. Mc Minn
County Surveyor

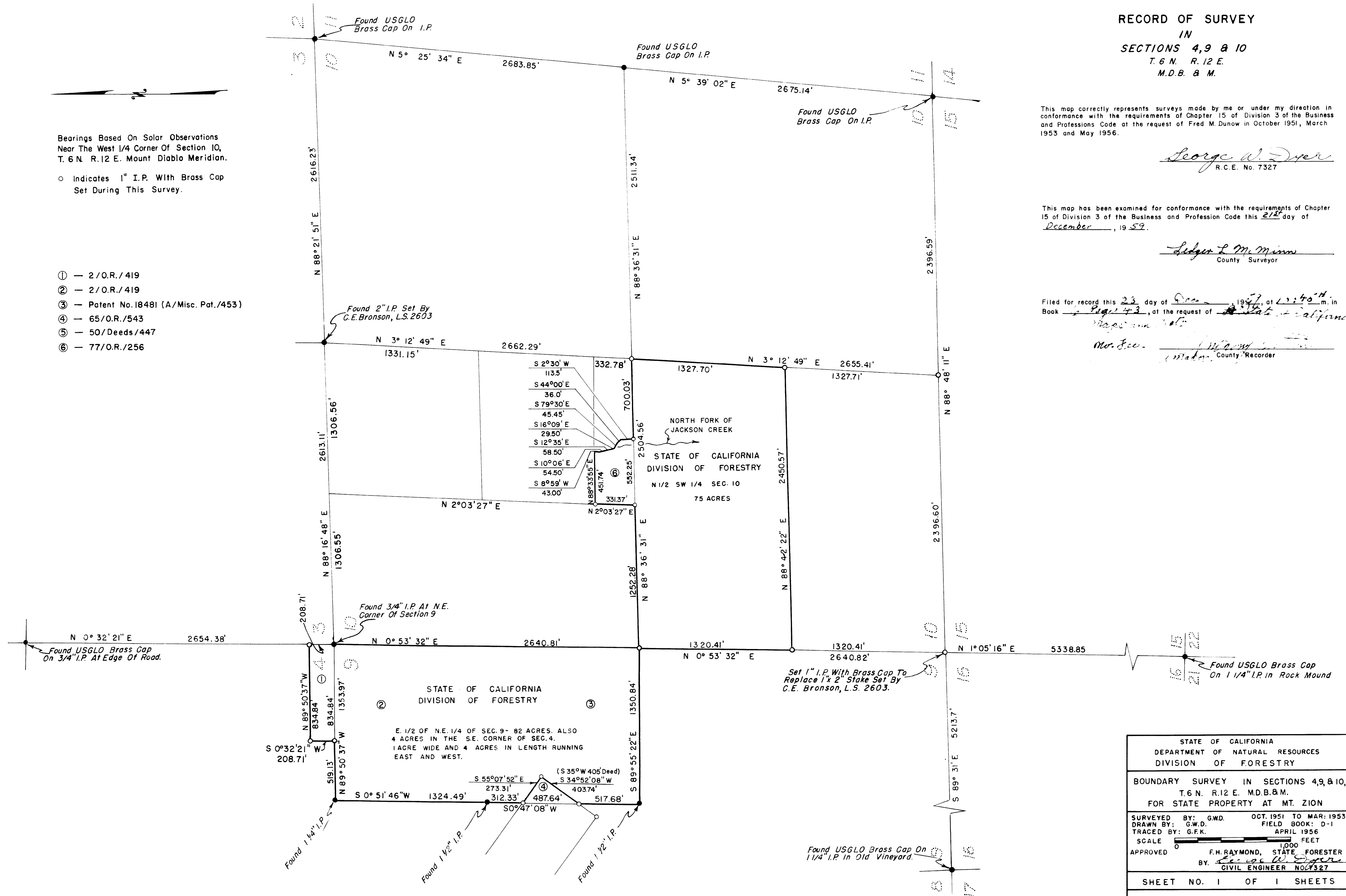
Filed for record this 23 day of Dec, 1959, at 12:40 p.m. in Book Page 43, at the request of State of California

Mr. J. C. ...
County Recorder

Bearings Based On Solar Observations
Near The West 1/4 Corner Of Section 10,
T. 6 N. R. 12 E. Mount Diablo Meridian.

○ Indicates 1" I.P. With Brass Cap
Set During This Survey.

- ① — 2/O.R./419
- ② — 2/O.R./419
- ③ — Patent No. 18481 (A/Misc. Pat./453)
- ④ — 65/O.R./543
- ⑤ — 50/Deeds/447
- ⑥ — 77/O.R./256



STATE OF CALIFORNIA DEPARTMENT OF NATURAL RESOURCES DIVISION OF FORESTRY	
BOUNDARY SURVEY IN SECTIONS 4, 9 & 10, T. 6 N. R. 12 E. M.D.B. & M. FOR STATE PROPERTY AT MT. ZION	
SURVEYED BY: G.W.D.	OCT. 1951 TO MAR. 1953
DRAWN BY: G.W.D.	FIELD BOOK: D-1
TRACED BY: G.F.K.	APRIL 1956
SCALE 0 1,000 FEET	
APPROVED	F.H. RAYMOND, STATE FORESTER
BY: <i>George W. Dyer</i> CIVIL ENGINEER NO. 7327	
SHEET NO. 1 OF 1 SHEETS	
FILE DRAWERS: E-9 & 179	